

Financial Statements 2008



IPPF is a global service provider and a leading advocate of sexual and reproductive health and rights for all. We are a worldwide movement of national organizations working with and for communities and individuals.

IPPF works towards a world where women, men and young people everywhere have control over their own bodies, and therefore their destinies. A world where they are free to choose parenthood or not; free to decide how many children they will have and when; free to pursue healthy sexual lives without fear of unwanted pregnancies and sexually transmitted infections, including HIV. A world where gender or sexuality are no longer a source of inequality or stigma. We will not retreat from doing everything we can to safeguard these important choices and rights for current and future generations.

Contents

Executive summary	2
Annual report of the Governing Council	4
Report of the independent auditors to the Governing Council of the International Planned Parenthood Federation	20
Statement of financial activities	22
Balance sheets	23
Cash flow statement	25
Notes to the financial statements	27
Contacts	62

Executive summary

Income in 2008 of US\$119.6 Million

Income received from governments, foundations and other sources has increased over the past five years by 37%. On average receipts from major donors have risen by 5.6% year on year in local currency terms. The slight fall in income in 2008 is caused in part by the strengthening of the US dollar, which has impacted on the value of receipts in other currencies in the latter stages of the year. This is coupled with a reduction in restricted income from multilaterals and other sources.

Donors continue to support unrestricted activities with over 72% of funds being available for IPPF to allocate to Strategic Priority areas.

Expenditure in 2008 of US\$121.4 Million

Expenditure on grants to Member Associations and partner organizations of US\$71.4 million, an increase of over 15% from 2007.

The costs involved in raising resources represents 2.9% of our expenditure.

Figure 1: IPPF Income 2003-2008

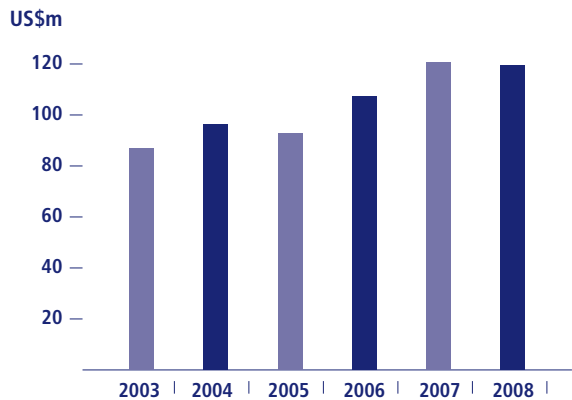
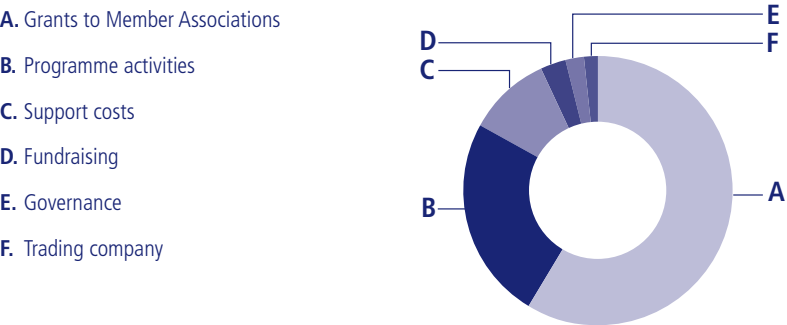


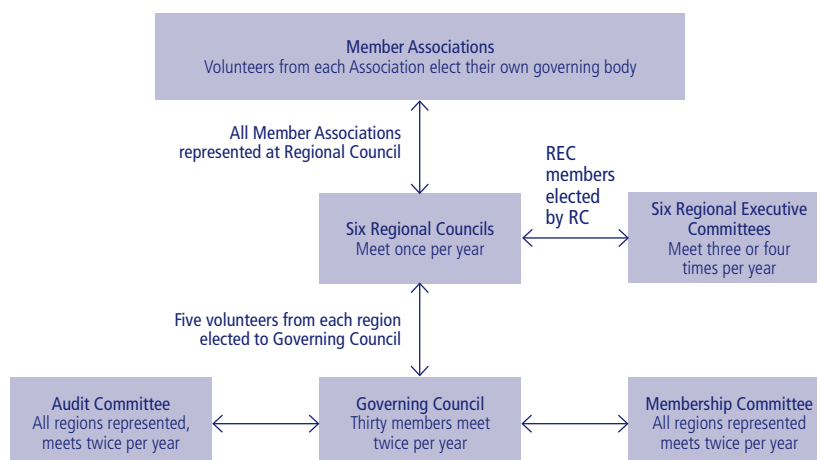
Figure 2: Expenditure in 2008 of US\$121.4 Million



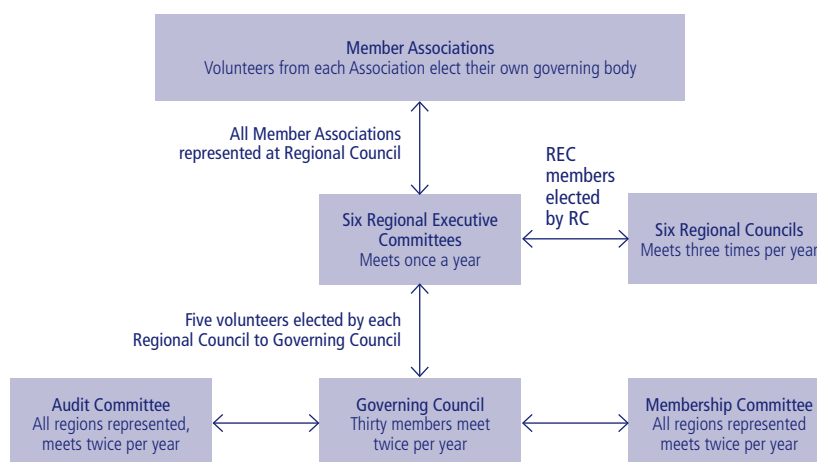
Audit opinion

Our auditors, KPMG LLP have provided an unqualified audit opinion on our 2008 financial results.

Figure 3: IPPF Governance Overview



In May 2008, IPPF's governance structure was revised and the Regional Executive Committee assumed increased responsibility as shown.



Annual report of the Governing Council

Introduction

The International Planned Parenthood Federation (IPPF) is a global service provider and a leading advocate of sexual and reproductive rights for all. IPPF is a worldwide movement of national organizations working with and for communities and individuals.

IPPF currently has 151 Member Associations. These Member Associations are working in 164 countries (the Caribbean Family Planning Affiliation operates in 14 countries). In addition, IPPF is active in a further 12 countries where there is not currently a Member

Association. This brings the total number of countries in which IPPF is working to 176.

The Member Associations of IPPF are all autonomous and report independently, therefore their accounts are not presented here.

The accounts contained herein have been prepared in accordance with the Statement of Recommended Practice (SORP), Accounting and Reporting by Charities, as issued by the Charity Commission in 2005.

We are a worldwide movement of national organizations working with, and for, communities and individuals.



Structure, governance and management

Governing document

IPPF was formed in 1952 and incorporated in 1977 under a UK Act of Parliament: *The International Planned Parenthood Federation Act 1977*. The Governing Council confirm that the Strategic Framework is in alignment with the purposes stated in the Act.

Public benefit

In April 2008 the Charity Commission guidance on Public Benefit was considered with the recommended self-assessment for the public benefit principles undertaken. The Governing Council confirm that the aims of the organization as stated in *The International Planned Parenthood Act 1977* meet the charitable purposes as outlined in *The Charities Act 2006*. Specifically, IPPF is engaged with purposes in relation to the 'advancement of health or the saving of lives' and the 'advancement of human rights'.

As outlined in the Strategic Framework, IPPF is engaged in purposes which have general public benefit in the 164 countries in which IPPF currently works with our Member Associations. IPPF works through one organization in each of these countries. Member Associations do not pay any fee to become or maintain their membership of the IPPF. Through the global indicators IPPF assesses its ability to meet the needs of the poor, marginalized, socially-excluded and/or under-served groups, ensuring that those in poverty have the opportunity to benefit from the services IPPF provides.

Governance

IPPF is governed by a Governing Council, composed of 30 volunteers from the Membership Associations, and appoints a Director-General as its Chief Executive Officer responsible for managing the affairs of the Federation as determined by the Governing Council.

Governing Council members are elected for a period of three years. Each Regional Council elects five members to serve as Governing Council members and also elects a Regional Executive Committee to govern the affairs of the region. Each Member Association has a volunteer Board of Directors (elected by the membership of the Association) and sends one or more as a delegate to one of six Regional Councils.

The Governing Council meets twice per year, for three days at a time. This Council has two sub-committees; the Membership Committee and the Audit Committee which meet twice per year for one day at a time.

Following the election of a new Governing Council, members receive a comprehensive induction pack outlining their responsibilities as UK charity trustees. In addition, an interactive session is held where members are provided with materials in relation to strategy, policies and finances as well as practical elements concerning the role distinctions between volunteers and staff.

Incorporated under a UK Act of Parliament, IPPF's aims are the advancement of health and human rights.



Through our Secretariat offices and Member Associations we are promoting the importance of IPPF's work to human development.

The responsibilities of the governing council

Under charity law, the members of the Governing Council are responsible for preparing the Trustee Report and the financial statements for each financial year which show a true and fair view of IPPF and the results for that period.

In preparing these financial statements, generally accepted accounting practice entails that the Governing Council members:

- Select suitable accounting policies and then apply them consistently;
- Make judgements and estimates that are reasonable and prudent;
- State whether the recommendations of the Statements of Recommended Practice have been followed, subject to any material departures disclosed and explained in the financial statements;
- State whether the financial statements comply with *The International Planned Parenthood Act 1977*, subject to any material departures disclosed and explained in the financial statements;
- Prepare the financial statements on a going concern basis unless it is inappropriate to presume that the group and the charity will continue its activities; and
- Safeguard the assets of IPPF and hence take reasonable steps for the prevention and detection of fraud and other irregularities.

The Governing Council's members are required to act in accordance with *The International Planned Parenthood Act 1977*, within the framework of trust law. They are responsible for keeping proper accounting records, sufficient to disclose at any time, with reasonable accuracy, the financial position of the charity at that time. This enables the Governing Council to ensure that, where any statements of accounts are prepared by them under section 42(1) of *The Charities Act 1993*, those statements of accounts comply with the requirements of regulations under that provision.

The Governing Council's members are responsible for the maintenance and integrity of the financial and other information included on the IPPF website. Legislation in the UK governing the preparation and dissemination of financial statements may differ from legislation in other jurisdictions.

Organization

IPPF has a Secretariat that carries out the policies and functions as approved by the Governing Council. The Secretariat has its headquarters in London and is divided into Central and Regional functional units.

There are six Regional Offices: Africa (Nairobi, Kenya), Arab World (Tunis, Tunisia), East/South East Asia and Oceania (Kuala Lumpur, Malaysia), Europe (Brussels, Belgium), South Asia (New Delhi, India), and Western Hemisphere (New York, USA). These Regional Offices all act as branches of IPPF, in accordance with *The International Planned Parenthood Federation Act 1977*.

The Director-General and Deputy Director-General are based in Central Office, London. There are six Regional Directors who report to the Director-General together with three Central Office Directors and the Financial Director.

IPPF has a trading subsidiary, Icon Ltd, based in Central Office, London. The company primarily engages in commodity supply services, and the social marketing of contraceptives in conjunction with Member Associations.


Within the Western Hemisphere Region there are two entities, the Regional Office, IPPF Western Hemisphere Inc and a separate entity used for investing significant bequests, the IPPF WHR Fund. The results of both these entities are reported within these accounts.

Risk management

While no system of internal control can provide absolute assurance against material misstatement or loss, the IPPF risk management system has been developed to provide reasonable assurance to the Governing Council that there are proper procedures in place and that they are operating effectively.

The key elements of the system of internal control are:

- **Delegation:** there is a clear organizational structure with lines of authority and responsibility for control together with procedures for reporting decisions, actions and issues;
- **Reporting:** the Governing Council approves and reviews the annual work programme budget and income predictions and monitors actual and forecast income and expenditure on a regular basis;
- **Risk management:** there are processes in place for identifying, evaluating and managing significant risks faced by IPPF. Each Regional Office and the Central Office prepare individual risk maps. These risks are classified according to type (governance, strategic, operational, financial, compliance and external/reputational). From these the 'top 10 organizational risks are identified' with an assessment of the impact and likelihood of the risk occurring. Also identified are any action still required to improve the management of that risk and the person who will be responsible to undertake this. These are reviewed annually by the Audit Committee and the Governing Council who believe that all the major risks to which IPPF is exposed have been identified and reviewed and that systems have been established to mitigate those risks;
- **Internal audit:** the internal audit function, which has been outsourced to Haysmacintyre, assesses risks and reviews controls within IPPF; and
- **Review:** the Audit Committee is comprised of four members elected by Governing Council from a list of persons who are volunteer members of a member organization but who are not members of Governing Council, as well as the President and Treasurer. The Committee oversees the adequacy of the system of internal control, and ensures IPPF compliance with relevant statutory and other financial regulations and advises the Governing Council of any relevant matters.



Global indicators enable us to gauge how we are meeting the needs of the poor and marginalized.

In 2009 we are undertaking a mid-term review of progress in our five priority areas: adolescents/young people, HIV/AIDS, abortion, access and advocacy.

Objectives and activities

Strategic framework

The November 2003 Governing Council approved the *IPPF Strategic Framework, 2005-2015*. This framework is built around five priority focus areas called the Five 'A's:

Adolescents/Young People:

Providing youth friendly services to meet the needs and rights of young people.

HIV/AIDS: Increasing access to prevention, care, support and treatment globally, and to reduce barriers that make people vulnerable to infection.

Abortion: To advocate for the right to safe abortion services and provide them to the fullest extent permitted by law.

Access: Ensuring access to information and services to improve sexual and reproductive health with particular focus on marginalized communities.

Advocacy: To strengthen recognition of the importance of sexual and reproductive health within the context of international development and to increase resources in support of sexual and reproductive health services.

The Strategic Framework is not intended to impose a rigid set of rules or constraints. Rather, it embraces the diversity of situations Member Associations and Regions face. Underpinning the Five 'A's is a commitment to organizational accountability, efficiency and effectiveness. The accreditation system is dedicated to ensuring that Member Associations are well governed and managed and that they provide relevant up-to-date information and high quality training and clinical services. There is also an emphasis on building Member Associations' capacity, and that of the Federation as a whole, to develop the skills and technical knowledge needed to implement and resource the new framework.

In order to assess our progress against each of the Five 'A's a series of Global indicators were developed. These were gathered from Member Associations across the Federation and enable IPPF to review, monitor and evaluate performance against key goals.

In 2009, IPPF is undertaking a midterm review of progress in implementing its Strategic Framework since 2005. The review will generate critical questions and stimulate discussion on how implementation of the Framework can be modified to maximize results achieved in the second phase to 2015.

Grant making procedures

IPPF allocates resources using criteria relating to the level of need in each of the five strategic priority areas, using internationally recognized data to assess these needs.

The Governing Council has established the level of unrestricted funding which should be allocated to each Region. The Regions then make decisions on the individual funding to their Member Associations. The highest priority is for the Africa and South Asia Regions which are allocated 44.5% and 16.0% respectively.

Unrestricted grants are awarded on an annual basis with Member Associations submitting an Annual Programme Budget which outlines the activities and funding in relation to the Strategic Framework. This process is undertaken by many Associations using IPPF's electronic Integrated Management System (eIMS). Once approved, Member Associations receive funding in five instalments during the year based on satisfactory submission of half yearly and annual reports, audited financial statements and management letters. The Regional Offices act as the main agents in monitoring individual Member Associations and providing technical assistance as required.

In relation to restricted grants, these are organized for a diverse range of donors and project activities and the Secretariat acts as the implementing partner and reporting mechanism for Member Associations receiving the funding. The specific procedures in relation to issuing grants are guided by the donor funding agreement.

Areas of IPPF's work

The following provides a brief overview of some IPPF activities and achievements in 2008. Further information is available from our website (www.ippf.org) and in our *Annual Performance Report* which has more extensive information regarding each of the strategic areas, case studies highlighting achievements in a range of Member Associations and commentary on the outcome of the 2007 global indicators.

Adolescents & young people

IPPF is wholly committed to fostering a culture where sexuality and choice are promoted and in which young people can lead healthy sexual lives and firmly believes that human and sexual rights apply to all people irrespective of religious context. In IPPF's review of Adolescent Youth Programming in 2006/2007, this issue was identified as one of the key challenges for the Federation in moving the agenda of the Adolescent Framework forward. In November 2008, IPPF held a meeting with young volunteers and staff from all parts of the world with the theme '**Faith, Religion, Sexuality and Young People**'. The main aim of the meeting was to explore how the Federation can better serve young people who live in different religious settings and contexts. The meeting provided an opportunity for young people to share and listen to each other on sensitive issues. This initiative will be replicated at regional, national and local levels in the Federation.

In 2008, a global project to promote **comprehensive sexuality education** started for a period of two years. The primary goal of this innovative advocacy project, funded by Danida, is to promote comprehensive sexuality education and to ensure the integration and implementation of comprehensive, gender-sensitive and rights based sexuality education in the national curriculum. This project is based on IPPF's earlier activities and publications, including **IPPF's Framework for Comprehensive Sexuality Education** and '**From Evidence to Action**': IPPF's advocacy tool to promote comprehensive sexuality education'. The project includes training of staff and young volunteers, developing networks and awareness raising with teacher and parents organizations and working closely with the Ministries of Education, especially with the departments of curriculum development.

In May 2008, the Governing Council of IPPF approved the revised policy on men and sexual and reproductive health. The policy emphasizes the importance of working with men and boys, as clients, partners and agents of change in our efforts to meet the goals and objectives of the Federation's Strategic Framework. This applies to males of all sexual orientations, including those who have sex with other men (homosexual, bisexual and transgender) and regardless of HIV status. By this new policy, the Federation also recognises the importance of early intervention to foster healthy sexual health attitudes and behaviours among boys and young men.

We are committed to fostering a culture where sexuality and choice are promoted and in which young people can lead healthy sexual lives.



HIV/AIDS

Over the past year, IPPF has been at the forefront of efforts to ensure that a comprehensive response to HIV is situated within a larger sexual and reproductive health framework. To build the evidence base to support stronger linkages between SRH and HIV programmes, IPPF has, in collaboration with UNFPA, WHO and UNAIDS, and in partnership with the Cochrane Collaboration HIV Review Group, conducted a systematic review. The findings of the review indicated that, despite diverse settings and clients, the majority of studies showed that linking SRH and HIV leads to an increase in access to and uptake of services. These services include HIV testing, health and behavioural outcomes, condom use, HIV and sexually transmitted infection knowledge and overall quality of service.

Through all its programmes IPPF seeks to strengthen and expand the HIV competency of our staff, volunteers and partners to confront the most complex of issues in relation to the epidemic. IPPF's HIV Competencies Workshop took place in Mexico City and brought together the 20 HIV Global Focus HIV Member Associations with Regional and Central Office staff to build collective HIV competency through sharing experiences and best practice. Technical areas that were highlighted ranged from positive prevention and scaling up the prevention of mother-to-child transmission services to addressing the criminalization of HIV transmission and the meaningful involvement of people living with HIV in IPPF's programmes and governance structures.

IPPF is increasingly recognized as a pioneer of the linkages agenda and was well represented at the **17th International AIDS Conference** with more than 85 IPPF delegates involved in skills-building and satellite sessions; and oral and poster presentations. Under the theme of 'Tried and Applied' the IPPF team distributed over 10,000 condoms and over 5000 publications. IPPF sought to place its work as part of a coherent response to HIV and AIDS

that links prevention with treatment, care and support and responds to the unique regional and national characteristics of the epidemic.

Addressing HIV related stigma and discrimination through services and advocacy is an essential component of our work. In partnership with UNAIDS, the Global Network of People Living with HIV (GNP+) and the International Community of Women living with HIV and AIDS (ICW), IPPF began scaling up the *People Living with HIV Stigma Index*. Extensive regional work was carried out to ensure the development of the necessary global systems and structures have been put in place to support the subsequent national research with the stigma index. Key achievements include the development of seven bespoke regional training workshops bringing together over 80 organisations and 70 different countries. National rollout

and implementation of the stigma index is underway in 11 countries in 2008–2009 including Bangladesh, China, the Dominican Republic, Ethiopia, Kenya, Nigeria, Pakistan, Rwanda, Thailand, UK and Zambia.

Abortion

Many IPPF Member Associations work in challenging socio-political environments in relation to abortion. However, over the last year IPPF made important strides in preventing unsafe abortion-related maternal morbidity and mortality and continues to invest in increasing access to safe abortion services as part of a comprehensive sexual and reproductive health package.

In support of high quality safe abortion service provision and evidence based advocacy for increasing access to abortion care, two important publications were produced and disseminated:

Last year we made important strides in preventing unsafe abortion-related maternal morbidity and mortality.



The “**First Trimester Abortion Guidelines and Protocols: Surgical and Medical Procedures**” provides a broad framework to ensure that no aspect of care is overlooked when providing comprehensive abortion care in the first trimester of pregnancy and supports service providers to offer high quality, client-centred abortion and abortion-related services.

“**Access to Safe Abortion, A Tool for assessing Legal and Other Obstacles**”, encourages the exploration of national laws and policies relating to safe abortion, thereby informing advocacy activities and helping to ensure access to services to the fullest extent of the law.

The global project on **comprehensive abortion care**, which seeks to increase the capacity of member associations to provide high quality, safe abortion services, was expanded to include 14 projects in the European Network, Africa Region, the Arab World Region, Armenia, Bangladesh, Burkina Faso, Mongolia and Morocco.

An important component of this project is to introduce a new **clinical management information system (CMIS)** to Member Associations’ clinics. The system seeks to make the collection, analysis and use of service statistics more efficient and enables programmatic decisions to be informed by clinical data. The system has been successfully pilot tested in the clinics in Nepal and Indonesia and is expected to be rolled out to the other project locations in 2009. Moreover, it is intended that the learning and experiences gained from its use in the Global Comprehensive Abortion Care project will contribute to its effective implementation across the Federation in the future.

Through these interventions IPPF continues to establish itself as an important provider and advocate of safe abortion services.

Access

Ensuring provision of access to high quality sexual and reproductive health services is at the heart of IPPF’s work. The Access ‘A’ buttresses the other four strategic priorities, considering who IPPF serves and the best way to serve them.

To ensure that service providers across the Federation have access to the most up-to-date and highest quality information, Central Office staff continued to maintain the partnerships with key institutions such as FIGO, WHO, and UNFPA and hosted two International Medical Advisory Panel (IMAP) meetings in 2008. IMAP focused its efforts on revising statements relating to violence against women and family planning in crisis situations, additionally, they considered a new statement on the linkages between SRH and HIV. IMAP members remained available to comment on ad hoc technical and medical questions throughout the year. The dissemination of the quarterly IPPF Medical Bulletin to a wide internal and external audience ensured that IPPF held its place as a vital source of SRH information for service providers around the world.

Another landmark Access initiative in 2008 was the adoption, publication, and dissemination of *Sexual Rights: An IPPF Declaration*. The document embodies IPPF’s rights-based approach to service provision and further grounds our work in a human rights framework. The *Declaration* was approved by Governing Council in May 2008, and copies were in the hands of Member Associations by the year’s end. Substantive work on the implementation of sexual rights principles will continue in the coming years.

Lastly, efforts began in 2008 to develop a new set of essential standards for SRH service provision. Following on from the Quality of Care project, which ended three years ago, this initiative seeks to integrate quality assurance and service expansion efforts into the core, sustainable business of IPPF.

Access to high quality sexual and reproductive health services is at the heart of our work.



Advocacy

IPPF continues to influence global policy making and plays an important role in raising the profile of sexual and reproductive health on the international development agenda, protecting legislation and policies that support sexual and reproductive health and rights.

IPPF submitted official statements to the UN Commission on the Status of Women and the UN Commission on Population and Development and participated at both events to ensure that sexual and reproductive health and rights were fully incorporated into respective outcome documents. IPPF also made substantial contributions to the preparation process and attended the 4th Tokyo International Conference on African Development (TICAD IV) in May. As a result, the TICAD outcome document includes strong commitments to global health, with emphasis on maternal and child health including family planning and sexual and reproductive health. IPPF played an important role in linking non-governmental organizations and UN agencies around this global event. In London, IPPF organized a successful World Population Day reception in July, which included keynote speeches by Sarah Brown, Patron of the White Ribbon Alliance and wife of Prime Minister Gordon Brown, and Gillian

Merron, MP, Parliamentary Under Secretary of State for International Development. At the UN High Level Event on the Millennium Development Goals (MDGs), IPPF collaborated with governments, civil society organizations and the private sector to raise the profile of MDGs 4 and 5. In recognition of IPPF's contributions towards MDG 3, specifically for our work around sexual rights, the Government of Denmark awarded IPPF an MDG 3 Champion Torch.

IPPF helped form the ICPD+15 Working Group of the UK Sexual and Reproductive Health and Rights Network, and is a member of the Network's working group for maternal health and sits on its Steering Committee. IPPF also gave evidence at UK parliamentary hearings on maternal morbidity.

IPPF Central Office is also piloting a new model of advocacy through Member Associations in 10 countries. Member Associations are advocating with their governments for greater commitments to sexual and reproductive health services and supplies, in part through increased resource allocations and the implementation of supportive policies. There have been some impressive outcomes, such as in Nigeria, where the national government has increased its efforts to reduce maternal mortality.

Accreditation

IPPF launched a systematic and comprehensive accreditation system in 2003. This scheme reviews and measures the extent to which all Member Associations comply with IPPF's 65 essential standards of membership. These standards cover issues of governance, management, programming and service delivery. The accreditation reviews continued during 2008 and the total number of reviews carried out since 2003 now stands at 141. At the end of 2008, 91 Member Associations had received IPPF Accreditation. The Secretariat staff continues to work with the remainder in order to resolve outstanding issues.

A revised accreditation system was approved by IPPF Governing Council in May 2008. The streamlined system is organized around ten principles covering 49 membership standards asking Member Associations to be: open and democratic; well governed; strategic and progressive; transparent and accountable; well managed; financially healthy, a good employer; committed to results; committed to quality, and a leader in the sexual and reproductive health and rights movement in the country. Accreditation reviews using the revised system will start in 2009.

We continue to influence global policy, raising the profile of sexual and reproductive health on the international development agenda.



Achievements and performance

Global Indicators

IPPF seeks to demonstrate to donors and other stakeholders our collective achievements and performance. On an annual basis IPPF holds a Donors' Meeting with representatives from each of our large donors (governments, foundations).

This is an opportunity for us to engage in dialogue on progress made in meeting the goals and objectives of our Strategic Framework, and on the future programme and funding challenges. In December 2008 IPPF published the Annual Performance Report, including the results for

30 global indicators. These are summarized below. Further information showing regional results and greater details are provided in the Performance Report.

The 30 global indicators are:

		(2005)	Latest results (2007)
ADOLESCENTS			
1	Proportion of Member Associations with 20% or more young people aged under 25 on their Governing Board	16.7%	42.2%
2	Percentage of Member Association staff who are under 25 years of age	4.0%	4.4%
3	Proportion of Member Associations providing sexuality information and education to young people	95.2%	93.9%
4	Proportion of Member Associations providing sexual and reproductive health services to young people	93.7%	95.2%
5	Proportion of Member Associations advocating for improved access to services for young people	98.4%	98.6%
6	Number of sexual and reproductive health services (including family planning) provided to young people under 25 years of age	7,869,331	15,356,348
HIV and AIDS			
7	Proportion of Member Associations with a written HIV and AIDS workplace policy	7.9%	50.3%
8	Proportion of Member Associations providing HIV-related services along the prevention to care continuum	3.2%	40.1%
9	Proportion of Member Associations advocating for increased access to HIV/AIDS prevention, treatment and care, and reduced discriminatory policies and practices for those affected by HIV and AIDS	31.0%	53.1%
10	Proportion of Member Associations with strategies to reach people particularly vulnerable to HIV infection	69.8%	75.5%
11	Proportion of Member Associations conducting behaviour change communication activities to reduce stigma and promote health-seeking behaviour	66.7%	71.4%
12	Number of HIV-related services provided	1,320,599	3,287,697
13	Number of condoms distributed	97,855,691	125,601,990
ABORTION			
14	Proportion of Member Associations advocating for reduced restrictions and/or increased access to safe legal abortion	74.6%	66.7%
15	Proportion of Member Associations conducting IEC/education activities on (un)safe abortion, the legal status of abortion and the availability of legal abortion services	43.7%	56.5%
16	Proportion of Member Associations providing abortion-related services	82.5%	85.7%
17	Number of abortion-related services provided	219,229	652,010
ACCESS			
18	Proportion of Member Associations conducting programmes aimed at increased access to SRH services by poor, marginalized, socially excluded and/or under-served groups	78.6%	89.1%
19	Estimated percentage of Member Associations clients who are poor, marginalized socially excluded and/or under-served	56.6%	59.8%
20	Number of Couple Years of Protection (CYP)	6,121,077	7,585,595
21	Number of contraceptive services provided	17,335,608	24,807,708
22	Number of non-contraceptive sexual and reproductive health services provided	13,416,374	21,236,517
23	Number of service delivery points	58,470	55,920
24	Proportion of Member Associations with gender-focused policies and programmes	72.2%	70.7%
25	Proportion of Member Associations with quality of care assurance systems, using a rights-based approach	65.0%	77.6%
ADVOCACY			
26	Proportion of Member Associations involved in influencing public opinion on sexual and reproductive health and rights	71.4%	80.3%
27	Proportion of Member Associations involved in advancing national policy and legislation on sexual and reproductive health and rights	90.4%	88.4%
28	Number of successful national policy initiatives and/or positive legislative changes in support of sexual and reproductive health and rights to which the Member Association's advocacy efforts have contributed	51	47
29	Proportion of Member Associations involved in counteracting opposition to sexual and reproductive health and rights	80.2%	82.3%
30	Proportion of Member Associations advocating for national governments to commit more financial resources to sexual and reproductive health and rights	86.5%	85.7%

Resource mobilization increases the value of financial support for the sexual and reproductive health and rights movement globally, as well as for the Federation.

The results from the 2005 data acted as a benchmark in order to monitor annual performance in future years and as can be seen in most indicators there have been positive improvements to 2007. The 2008 data is not available at the time of approving these accounts. The results will be available in October 2009 and published in the IPPF Annual Performance Report 2008–2009.

Resource mobilization

Resource mobilization at IPPF is aimed at increasing the value of financial support for the sexual and reproductive health and rights movement globally as well as for the Federation. Through the combined efforts of the seven Secretariat offices and the Member Associations credibility is built for the issue, ensuring its relevance to major funding agencies. This is achieved by strengthening our networks and increasing the recognition of the importance of IPPF's work to human development.

Resource mobilization has a key role in maintaining donor confidence and financial support for the Federation. The Department is the key focal point for developing the strategic direction of communication with both existing and potential donors and coordinating

its execution. This communication includes policy dialogue and requests for funding.

The Resource Mobilization teams, based in the seven secretariat offices, work to build a sustainable platform of support from traditional and new funding sources. This includes strengthening links within existing funding markets, particularly governments, while breaking ground in modern funding markets for the future development and innovation of its resource mobilization programme. The staff involved are required to compile funding proposals and regular progress reports. With many individual restricted projects at any one time, significant efforts are made to ensure that donor funding requirements are complied with, and that reporting is provided on a timely basis.

In 2007 (the latest available figures) the total income for our grant receiving Member Associations was US\$281.7 million (2006: US\$262.7million). Of this funding, IPPF represented 22%, local income was 64% with other international sources providing 14%. With funding increasingly moving to the country level the resource mobilization efforts of the Member Associations will be essential to their long term financial sustainability.



With funding increasingly moving to country level, the efforts of our Member Associations are central to long-term financial stability.

Financial review

Statement of reserves

The members of the Governing Council have reviewed the level of reserves. Note 16 to the financial statements shows the funds of IPPF. This indicates the split of reserves between the general, designated, restricted and endowment funds.

In May 2008 the members of the Governing Council approved a target general reserve balance of 35% of the next year's (4.2 months) approved unrestricted expenditure. This level of reserves recognizes that in an increasingly uncertain economic environment IPPF needs to ensure it can meet its commitments to Member Associations and the Secretariat (Regional and Central Offices). The reserve balance also ensures that IPPF can provide funding in the first half of the year, as the majority of annual unrestricted government grants are received in the second half of the year.

At the time of approving the 2009 budget in November 2008, the general reserve at 1 January 2009 was estimated to be US\$37.7 million. The unrestricted expenditure programme budget approved for 2009 is US\$84.1 million. The general reserve therefore reflected 45% against our ideal position of 35%. The actual level of the general reserve at 1 January 2008 was US\$36.0 million. This represents 43% or 5.1 months of the budgeted 2008 unrestricted expenditure. This reserves position reflects the effect of favourable exchange rate movements in recent years, which have begun to reverse in the final quarter of 2008 with the strengthening of the US Dollar. The budget for 2009 anticipates a further reduction in reserve levels, and IPPF expects reserve levels to fall to 35% in the medium term.

Unrestricted funds are designated at the discretion of the trustees. The largest designated fund relates to the Western Hemisphere Sustainability Fund. This fund of US\$20.8 million was created in 2002 following the receipt of a legacy for use in the Western Hemisphere Region, as such it has been designated for that purpose. Since 2002 further legacies have been added to the fund.

Statement on investments

There are no restrictions under the 1977 Act in relation to the charity's powers to invest. IPPF currently hold investments in terms of shares and securities as well as cash deposits.

Shares and securities

All shares and securities held are traded on the New York Stock Exchange. The Western Hemisphere Regional Board have appointed an Investment Committee to monitor these investments. The Committee is comprised of seven members independent of the Board and who have relevant investment experience. A review of the investment managers performance was undertaken during 2004 and following a tender review of four managers, Merrill Lynch Asset Management were replaced on the majority of the portfolio by GMO (Grantham, Mayo, Otterloo & Co). The investment managers provide quarterly performance reports to the Investment Committee detailing all asset information as well as investment returns against appropriate indices. The investments within the GMO Balanced Allocation Fund are held in at least 65% equities (28% USA, 6% emerging markets and 31% other countries) and at least 35% fixed income. No specific social,

environmental or ethical considerations are placed on the investment managers.

IPPF continues to closely monitor the performance of their investments and in 2008 the fall in the stock market has had a significant impact on the value of investments reducing their value by \$6.5m. A benchmark of (28%) yield return (net of fees) was set for the GMO Balanced Allocation Strategy in 2007. Actual performance at (19.5%) was above the target benchmark.

Cash

Regular cash-flow predictions for both unrestricted and restricted income and expenditure are prepared. Given the historical timing of receipts the level of cash on deposit varies significantly during the year. In order to obtain sufficient returns on such balances, yet allowing for reaction to emergencies, surplus liquid assets are placed on short-term deposit on a weekly basis. Investment options are regularly reviewed and IPPF have identified deposit accounts which allow the maximum interest to be generated from cash balances whilst giving the flexibility of access to those funds at short notice and these accounts are used when the cash reserves warrant such investment.

Financial summary

During 2008, IPPF provided US\$71.4 million to Member Associations and partner organizations in the form of grants. Through the Regional and Central Offices a further US\$29.6 million was provided in direct technical assistance and support, enhancing the quality of services of all IPPF Member Associations.

Income

On average funding from major donors has increased by 5.6% in local currency terms, however overall income received by IPPF in 2008 was US\$119.6 million, compared with US\$120.6 million in the previous year. This decrease of 0.8% has been caused by a reduction in restricted income from multilaterals and other sources coupled with the strengthening of the dollar against donor currencies in 2008. Since 2003, IPPF's income has seen a very welcome increase from US\$87.0 million, representing 37% growth.

IPPF's main source of funding is government contributions which accounted for 77% of the total incoming resources. Unrestricted government grants showed an increase of 3% or US\$2.0 million. This was due to increased contributions from the Governments of Australia, Finland, New Zealand, South Korea, Sweden, and the United Kingdom.

Restricted government grants amounted to US\$14.0 million, up from US\$11.2 million in 2007. The Japanese Government provided a further US\$1 million for the IPPF Japan Trust Fund. The Australian Government provided substantial resources for the Pacific Islands and the Danish Government supported Sexuality Education work with young people. The Government of the Netherlands provided \$4.6m to support a variety of projects with a focus on youth. In addition IPPF holds the funding for the Safe Abortion Action Fund established in 2006 to which a number of European donor governments continued to contribute with US\$4.4 million received.

Grants from multilaterals and other income sources amounted to US\$23.0 million compared with US\$28.9 million in the previous year. The support of a number of US Foundations who provide unrestricted funding along with income raised by the IPPF private sector fundraising programme from the general public has allowed IPPF to diversify funding and support a wide variety of innovative projects.

Expenditure

The overall expenditure in 2008 was US\$121.4 million. This compared with US\$101.9 million in the previous year.

Grants to Member Associations rose by 16%, this was due to an increase in unrestricted grants of 6.7% (US\$2.9 million) and an increase in restricted grants of 40% (US\$6.7million).

Restricted income received was less than the restricted expenditure during the year. This was partly due to timing differences between the receipt and expenditure of restricted funds, with a number of restricted expenditures arising in 2008 in respect of funds that were received in prior years. In addition, IPPF also entered into a number of new agreements with donors and Member Associations for restricted projects. IPPF has recognized the grant expenditure for these agreements in 2008, but will not recognize the related income until it is received in future years. For details of specific restricted funds in deficit, please see below.

Funds (including pension fund deficit)

When compared with 2007, IPPF's total funds and reserves have decreased from US\$111.3 million to US\$104.7 million.

The general fund decreased by US\$1.7 million in 2008, to an overall level of US\$36.0 million. US\$3.9 million of the general fund decrease reflects the revaluation of the balance sheet and is therefore a paper movement rather than representing cash or other assets.

The largest designated reserve (US\$20.8 million) relates to a substantial individual legacy received by Western Hemisphere Region in 2002 which is being invested and the income used to fund projects within that region (4% of the capital was released in 2008).

The restricted fund balance of US\$22.1 million reflects funds received in advance of the project related activities being completed. These funds will be used in 2009 and beyond. Any funds showing a negative balance at the year-end (where expenditure to date has exceeded income) have additional funding secured in a project agreement and will be cleared when funds are received in 2009 and beyond. A number of funds had negative balances above \$100k. The Spain/United Nations Fund for Population Activities Advocacy Programme is showing a deficit of \$1,114k- under the funding agreement for this project, expenditure was incurred in 2008, but the related funding was received after the year end and will be recognised in 2009. The remaining funds showing negative balances above \$100k are Eric E. Edith Bergstrom Foundation – Promoting real options (\$415k), European Commission – Improving SRH&R for Street Kids (Sante) (\$141K) and EC V2F Project (\$254k). These are all multi-year projects – expenditure has been recognised for these projects, but the related income cannot be recognised until its receipt in future years.

The balance sheet in 2008 includes the pension liability of US\$4.1 million. This has substantially decreased from a liability of US\$10.3 million in 2007. This liability forms part of the unrestricted funds and represents the total future liability arising from the Central Office Defined Benefit Scheme. Like most UK organizations with such a scheme, IPPF have a deficit of long term funding.

The defined benefit scheme was closed in 2007. A payment of \$4.8 million was made to the scheme in 2008 as part of the on-going plan to reduce the long term liability in line with the deficit elimination plan which was submitted to and approved by the UK Pension Regulator in 2007. The assumptions used to calculate the FRS17 pension liability are in line with typical market practice at the time of commissioning our FRS17 report. However, market conditions are constantly changing, and the FRS17 valuation can be sensitive to changes in the underlying assumptions.

Trading Subsidiary

2008 was the seventh year in which the trading subsidiary of IPPF, ICON Ltd operated. The company primarily engages in commodity supply services and with the social marketing of contraceptives in conjunction with Member Associations. In 2008 the company made a trading profit after tax of US\$5k for the year to 31 December 2008. This will be retained by the company in order to fund cash flow and expansion. This result includes inter-company income from IPPF, which is eliminated from the consolidated IPPF financial statements.



We are working with our Member Associations to implement the Declaration of Sexual Rights, bringing the reality of such rights to individual communities and people.

In 2009 the '15 and counting' campaign will harness the power of social networking to focus young people's attention on the health of future generations.

Plans for future periods

Plans for 2009

The vision for 2009 and beyond is a Federation strongly committed to delivering the **Five 'A's**. In 2009 IPPF will prioritize increases in service delivery, both in terms of clinical services and in improving the provision of comprehensive sex education, information and communications. To support this, IPPF plans an increased focus on Member Association sustainability with planned initiatives both on cost efficiency and effectiveness, and on local resource mobilization.

The overturning of the 'Global Gag' Rule in the US has important implications for IPPF, providing a new opportunity for stronger global leadership on sexual and reproductive health and rights and enabling IPPF to further develop programmes to support the delivery of the **Five 'A's**.

The **Declaration of Sexual Rights** was approved by the Governing Council. The Declaration defines sexual rights within a human rights context, and thereby informs advocacy and service delivery. During 2009 IPPF will work with Member Associations to implement the declaration using it to highlight the work still to be done to bring the reality of such rights to individual communities and people.

In 2009, young people born in the year of the International Conference on Population and Development (ICPD), 1994, will be 15 years old, an age when the issues of sexual health and reproductive rights become pressing. This generation has a vested interest in the progress of the Programme of Action. To address this, in 2009, IPPF will launch a ICPD+15

campaign '15 and counting' that will call on young people through social networking to focus attention on the Programme of Action and the health of future generations. In addition using funding received from the government of the Netherlands IPPF will start a major programme working with our Members Associations, the aims of which will be to strengthen youth friendly services in 18 Member Associations and support the regions to build the capacity of Member Associations youth staff, programme officers and young volunteers.

By continuing to work along the prevention to care continuum IPPF will ensure that both the quantity and quality of linked services are increased, focusing on addressing the sexual and reproductive health needs of PLHIV, key populations and young women and girls. By strengthening our partnerships through application of the **People Living with HIV Stigma Index** in a number of countries, advocating on issues such as the criminalization of HIV and the creation of IPPF+, IPPF will ensure that new modalities are highlighted to address HIV related stigma and discrimination.

A major priority continues to be the need to strengthen **advocacy and resource mobilization** to ensure that the critical role of civil society is not forgotten in an increasingly competitive and complex world of new development aid architecture. IPPF will continue to put in place strategies to assist the organization at every level to access the funding available. The new Millennium Development Goal target of universal reproductive health will require substantial investment in order to be achieved.

IPPF has a unique and extensive global reach and diversity. We recognize the importance of learning from our own experiences and from others. We shall continue to strengthen **partnerships** at all levels; local, regional and globally. This is important if we are to achieve the vision of a global movement committed to sexual and reproductive health and rights for all.

Future Funding

IPPF continues to try to increase longer term stability and income. The on-going economic crisis is a concern for IPPF, but the increasing numbers of donors who have committed long term funding goes some way to reducing this risk. Whilst we have not had confirmation for all 2009 contributions indications for the coming year are generally positive with many donors committing to at least the same level of funding as 2008.

IPPF continues to work on diversifying its funding base for both IPPF itself and Member Associations by increasing the number of fundraising opportunities

among non-governmental organizations including trusts, foundations, the private sector and individual giving.

Disclosure of information to auditors

The Governing Council members who held office at the date this report was approved, confirm that, so far as they are each aware, there is no relevant audit information of which the Charity's auditors are unaware; and each Governing Council member has taken all steps that s/he ought to have taken to make themselves aware of any relevant audit information and to establish that the Charity's auditors are aware of that information.

Thanks

IPPF thanks all its donors for their continuing and generous support. It also wishes to acknowledge the immense on-going contribution it receives from its volunteers, in terms of the time, hard work, and personal commitment. Volunteers

provide a huge range of help to the organization from assisting in clinics, sitting as Board members, acting as peer educators, meeting donors etc. Without this volunteer commitment IPPF could not achieve its mission or be the strong voice it currently is within the field of sexual and reproductive health and choices.

Approved on behalf of the Governing Council on 10 May 2009.



Dr Jacqueline Sharpe, President



Dr Naomi Seboni, Treasurer



We recognize the importance of learning from our own experience and from others by strengthening our partnerships at local, regional and global levels.

Report of the independent auditors to the Governing Council of the International Planned Parenthood Federation

We have audited the group and charity financial statements (the 'financial statements') of the International Planned Parenthood Federation for the year ended 31 December 2008 which comprise the group statement of financial activities, the group and charity balance sheets, the group cash flow statement and the related notes. These financial statements have been prepared under the accounting policies set out therein.

This report is made solely to the charity's Governing Council members, as a body, in accordance with section 43 of the *Charities Act 1993* and regulations made under section 44 of that Act. Our audit work has been undertaken so that we might state to the charity's Governing Council those matters we are required to state to them in an auditor's report and for no other purpose. To the fullest extent permitted by law, we do not accept or assume responsibility to anyone other than the charity and the Governing Council members as a body, for our audit work, for this report, or for the opinions we have formed.

Respective responsibilities of the members of the Governing Council and auditors

The Governing Council members' responsibilities for the preparation of the financial statements in accordance with applicable law and UK Accounting Standards (UK Generally Accepted Accounting Practice) are set out in the Statement of Governing Council Members' Responsibilities on page 6.

We have been appointed as auditors under section 43 of the *Charities Act 1993* and report in accordance with regulations made under section 44 of that Act.

Our responsibility is to audit the financial statements in accordance with relevant legal and regulatory requirements and International Standards on Auditing (UK and Ireland).

We report to you our opinion as to whether the financial statements give a true and fair view and are properly prepared in accordance with the *Charities Act 1993* and the *International Planned Parenthood Federation Act 1977*. We also report to you whether in our opinion the information given in the Governing Council's Annual Report is not consistent with the financial statements.

In addition we report to you if, in our opinion, the charity has not kept proper accounting records, if we have not received all the information and explanations we require for our audit, or if information specified by law regarding Governing Council member's remuneration and other transactions is not disclosed.

We read the Annual Report of the Governing Council and consider the implications for our report if we become aware of any apparent misstatements within it. Our responsibilities do not extend to any other information.

Basis of audit opinion

We conducted our audit in accordance with International Standards on Auditing (UK and Ireland) issued by the Auditing Practices Board. An audit includes examination, on a test basis, of evidence relevant to the amounts and disclosures in the financial statements. It also includes an assessment of the significant estimates and judgements made by the Governing Council in the preparation of the financial statements, and of whether the accounting policies are appropriate to the group's and charity's circumstances, consistently applied and adequately disclosed.

We planned and performed our audit so as to obtain all the information and explanations which we considered necessary in order to provide us with sufficient evidence to give reasonable assurance that the financial statements are free from material misstatement, whether caused by fraud or other irregularity or error. In forming our opinion we also evaluated the overall adequacy of the presentation of information in the financial statements.

Opinion

In our opinion

- the financial statements give a true and fair view, in accordance with UK Generally Accepted Accounting Practice, of the state of the group's and charity's affairs as at 31 December 2008 and of the group's incoming resources and application of resources in the year then ended; and
- the financial statements have been properly prepared in accordance with the Charities Act 1993 and the International Planned Parenthood Federation Act 1977.

KPMG LLP

KPMG LLP, Chartered Accountants
& Registered Auditor

11 May 2009

1 Forest Gate, Brighton Road,
Crawley, RH11 9PT, UK



IPPF continues to increase longer term stability and income in the face of the ongoing financial crisis. Thanks to the support of our donors and volunteers we continue to be a strong voice in the field of sexual and reproductive health and choices.

Statement of financial activities

Consolidated statement of financial activities for the year ended 31 December 2008

	Notes	Unrestricted \$'000	Restricted \$'000	Endowment \$'000	2008 Total \$'000	2007 Total \$'000
Incoming resources						
Incoming resources from generated funds:						
Voluntary income:						
Grants from governments	2	77,610	13,953	–	91,563	86,731
Grants from multilaterals and other income sources	3	6,498	16,514	–	23,012	28,925
Investment income and interest	4	1,733	394	–	2,127	2,483
Incoming resources from charitable activities:						
Income of subsidiary trading company		800	–	–	800	771
Other incoming resources:						
Foreign exchange gains		–	–	–	–	1,086
Other incoming resources		118	2,052	–	2,170	571
Total incoming resources		86,759	32,913	–	119,672	120,567
Resources expended						
Cost of generating funds:						
Central fundraising	7	1,604	–	–	1,604	1,771
Regional fundraising	6	1,952	–	–	1,952	1,441
Investment management costs		36	–	–	36	16
Expenditure of subsidiary trading company		1,775	–	–	1,775	1,514
Charitable activities:						
Grants to Member Associations & partners	5	48,103	23,342	–	71,445	61,770
Central expenditure	7	12,624	4,220	–	16,844	10,900
Regional expenditure	6	15,659	9,181	–	24,840	21,422
Governance costs	8	2,748	26	–	2,774	2,521
Pension finance charge	20	148	–	–	148	519
Total resources expended		84,649	36,769	–	121,418	101,874
Net incoming/(outgoing) resources before transfers		2,110	(3,856)	–	(1,746)	18,693
Transfers between funds	16	–	–	–	–	–
Net incoming/(outgoing) resources before other recognised gains and losses		2,110	(3,856)	–	(1,746)	18,693
(Loss)/Gain on investment assets	11	(6,012)	(276)	(240)	(6,528)	3,242
Actuarial (loss)/ gain on defined benefit pension scheme	20	(530)	–	–	(530)	6,226
Foreign exchange movements on pension liability	20	2,043	–	–	2,043	(508)
Net movement in funds		(2,389)	(4,132)	(240)	(6,761)	27,653
Funds brought forward at 1 January	16	83,842	26,259	1,241	111,342	83,425
Unrealized foreign exchange gain taken to reserves		167	–	–	167	264
Funds carried forward at 31 December	16	81,620	22,127	1,001	104,748	111,342

There are no recognized gains and losses other than those included above. All the above results arise from continuing operations. The notes on pages 27 to 61 form part of these accounts.

Balance sheets

Consolidated balance sheet as at 31 December 2008

	Notes	Unrestricted \$'000	Restricted \$'000	Endowment \$'000	2008 Total \$'000	2007 Total \$'000
Fixed assets						
Tangible assets	10	9,476	–	–	9,476	10,168
Investments	11	28,763	758	1,001	30,522	42,030
Long term loans	12	211	1,841	–	2,052	1,239
Total fixed assets		38,450	2,599	1,001	42,050	53,437
Current assets						
Stock of goods		2,229	–	–	2,229	602
Receivable from donors	13	296	818	–	1,114	3,633
Receivable from associations		867	166	–	1,033	1,160
Receivable from others		641	68	–	709	986
Prepayments		797	554	–	1,351	1,213
Cash at bank		54,869	23,951	–	78,820	70,825
Total current assets		59,699	25,557	–	85,256	78,419
Creditors: amounts falling due within one year						
Accounts payable		3,436	492	–	3,928	2,703
Payable to associations		3,010	3,464	–	6,474	2,680
Accruals and other creditors		2,170	22	–	2,192	1,465
Deferred income	14	3,614	2,051	–	5,665	3,126
Total current liabilities		12,230	6,029	–	18,259	9,974
Net current assets excluding pension liability		47,469	19,528	–	66,997	68,445
Provisions for liabilities and charges	15	174	–	–	174	204
Pension liability	20	4,125	–	–	4,125	10,336
Total net assets including pension liability		81,620	22,127	1,001	104,748	111,342
Represented by:						
Unrestricted:						
General		35,971	–	–	35,971	37,714
Designated		49,774	–	–	49,774	56,464
Restricted		–	22,127	–	22,127	26,259
Endowment		–	–	1,001	1,001	1,241
Total funds and reserves excluding pension reverse	16	85,745	22,127	1,001	108,873	121,678
Pension reserve	20	(4,125)	–	–	(4,125)	(10,336)
Total funds and reserves including pension reverse		81,620	22,127	1,001	104,748	111,342

Approved on behalf of the Governing Council on 10 May 2009.



Dr Jacqueline Sharpe
President



Dr Naomi Seboni
Treasurer

Balance sheets

Balance sheet (charity) as at 31 December 2008

	Notes	2008 Total \$'000	2007 Total \$'000
Fixed assets			
Tangible assets		9,472	10,164
Investments	11	30,522	42,030
Long term loans		2,299	991
Total fixed assets		42,293	53,185
Current assets			
Stock of goods		2,382	588
Receivable from donors	13	1,114	3,633
Receivable from associations		1,033	1,161
Receivable from others		617	705
Prepayments		1,351	1,214
Cash at bank		78,786	70,360
Total current assets		85,283	77,661
Creditors: amounts falling due within one year			
Accounts payable		4,127	1,768
Payable to associations		6,474	2,679
Accruals and other creditors		2,107	1,465
Deferred income	14	5,665	3,126
Total current liabilities		18,373	9,038
Net current assets excluding pension liability		66,910	68,623
Provisions for liabilities and charges	15	174	204
Pension liability	20	4,125	10,336
Total net assets including pension liability		104,904	111,268
Represented by:			
Unrestricted:			
General		36,125	37,638
Designated		49,774	56,463
Restricted		22,130	26,262
Endowment		1,000	1,241
Total funds and reserves excluding pension liability		109,029	121,604
Pension reserve		(4,125)	(10,336)
Total funds and reserves including pension liability		104,904	111,268

Approved on behalf of the Governing Council on 10 May 2009.



Dr Jacqueline Sharpe
President



Dr Naomi Seboni
Treasurer

Cash flow statement

Consolidated cash flow statement for the year ended 31 December 2008

	Note	\$'000	2008 \$'000	2007 \$'000
Net cash (outflow)/inflow from operating activities	a		(962)	5,705
Returns on investments				
Interest received and similar income			2,179	2,478
Capital expenditure				
Purchase of tangible assets		(365)		(323)
Purchase of marketable securities		–		(273)
Long term loans issued		(1,163)		(397)
Sale of tangible assets		4		7
Sale of marketable securities		11,701		6,938
Long term loan repayments received		350		355
				6,307
Increase in cash	b		11,744	14,490

Note a: Reconciliation of net incoming resources to net cash inflow from operating activities

Net (outgoing)/incoming resources	(1,746)	18,693
Interest receivable and similar income	(2,126)	(2,482)
Depreciation	1,046	1,045
Exchange movement on tangible assets	9	(7)
Exchange movement on pension liability	2043	(508)
(Decrease)/increase in pension liability	(6,210)	(10,408)
Actuarial (loss)/ gain on pension scheme	(530)	6,226
Loss on disposal of fixed assets	(1)	(5)
Donations in kind	(6,722)	(5,886)
Long term loans written off	–	212
Decrease/(increase) in stock	(1,628)	1,174
Decrease in receivables from donors	2,519	1,957
Decrease/(increase) in receivables from associations	128	(319)
Decrease/(increase) in receivables from others	225	(376)
(Increase)/decrease in prepayments	(138)	(686)
Increase/(decrease) in accounts payable	1,223	(138)
Increase/(decrease) in payable to associations	3,794	(2,763)
Increase)/(decrease) in accruals and other creditors	727	(662)
Increase in deferred income	2,538	1,919
Increase in provisions	(30)	22
Exchange movement on net funds	3,917	(1,303)
Net cash (outflow)/inflow from operating activities	(962)	5,705

Consolidated cash flow statement for the year ended 31 December 2008 (continued)

	Note	2008 \$'000	2007 \$'000
Note b: Reconciliation of net cash flow to movements in net funds:			
Increase in cash in the year		11,744	14,490
Movement on foreign exchange		(3,749)	1,571
Movement in net funds for the period		7,995	16,061
Net funds at 1 January		70,825	54,764
Net funds at 31 December	c	78,820	70,825

	At 1 Jan 2008 \$'000	Cash flows \$'000	Exchange movements \$'000	At 31 Dec 2008 \$'000
Note c: Analysis of changes in net funds:				
Cash in hand and at bank	70,825	11,744	(3,749)	78,820

Note of explanation

Cash balances are historically higher at 31 December each year due to the timing of government receipts, many of which are received in the last quarter of the financial year. However, the timing of grant payments to Member Associations means that the cash funds are significantly reduced in the first quarter of each financial year. The cash balance also includes restricted funds for use in the following years.

Notes to the financial statements

1 Accounting policies

Basis of accounting

These financial statements have been prepared under the historical cost convention, as modified for the revaluation of certain investments, and in accordance with applicable United Kingdom accounting standards, applicable United Kingdom law and the Statement of Recommended Practice ("SORP"), Accounting and Reporting by Charities (revised 2005), issued by the Charity Commission.

Basis of preparation

IPPF exists as an entity under the provisions of the IPPF Act. There are six regions within the Federation and the accounts of these are combined to form the IPPF. All of the Regional Offices act as branches of IPPF and therefore fall under the term 'branches' in accordance with FRS 2 'Accounting for Subsidiary Undertakings' and the Charities SORP.

IPPF Arab World Regional Office (Tunis, Tunisia), IPPF East and Southeast Asia and Oceania Regional Office (Kuala Lumpur, Malaysia) and IPPF South Asia Regional Office (New Delhi, India) are not separate entities and their results are included in those of the Central Office (London, UK).

IPPF Africa Regional Office (Nairobi, Kenya) and IPPF Europe Regional Office (Brussels, Belgium) are separate legal entities in their respective regions, and are treated as branches of the Central Office in London. Their results are included with those of the charity.

The IPPF Western Hemisphere Regional Office (New York, US) – IPPF Western Hemisphere Inc. is a separate company incorporated in the State of New York,

USA, as a membership corporation with not-for-profit status. All its results are combined with those of the charity, on the basis that its members are also members of IPPF, and are in a Regional Office pursuing the same objectives and policies as the rest of IPPF. IPPF WHR is not a trading subsidiary, and therefore its results have not been separately disclosed. In addition to the regional office, there are two other entities within this region – The IPPF WHR Fund and IPPF Worldwide Inc.

The IPPF WHR Fund is a separate entity used for investing significant bequests, the results of which are reported within these accounts. This entity is also considered to be a branch of IPPF.

IPPF Worldwide Inc (established in 2006) is a separately registered not-for-profit organization. This is established for the purpose of receiving funding from United States of America based organizations with income received being reflected within these financial statements. This entity is also considered to be a branch of IPPF.

IPPF has a trading subsidiary, ICON Ltd. This primarily engages in commodity supply services and social marketing of contraceptives in conjunction with Member Associations. Its results for the trading period to 31 December 2008 have been consolidated in accordance with FRS 2 'Accounting for Subsidiary Undertakings' on a line by line basis.

Incoming resources

Income is recognized in the period to which it is receivable (see separate deferred income policy).

Commercial trading activities

Income from commercial trading activities is included in the period in which the group is entitled to receipt.

Donations and grants

Grants from governments and other agencies have been included as donations and similar incoming resources as these relate to core funding or are provided for a general purpose rather than being service agreements. These are included in incoming resources when these are receivable, except as follows:

- When donors specify that donations and grants given to the charity must be used in future accounting periods, the income is deferred until those periods.
- When donors impose conditions which have to be fulfilled before the charity becomes entitled to use such income, the income is deferred and not included in incoming resources until the pre-conditions for use have been met.

Legacies

Legacies are recognized when the charity is advised by the personal representatives of an estate that payment will be made or property transferred and the amount involved can be quantified.

Investment income & interest

Investment income in the form of dividends together with interest is included when receivable by the charity.

1 Accounting policies (continued)

Intangible income

Donations in kind are included in donations and similar incoming resources where the amounts are material and an estimated market value is readily attainable. Commodities donated to IPPF for distribution to Member Associations are recognized as incoming resources to the extent that they have been distributed (or allocated for distribution) in the year.

IPPF wishes to acknowledge the immense on-going contribution it receives from its volunteers, in terms of the time, hard work, and personal commitment given to IPPF and its objectives. IPPF does not believe it is possible, or desirable, to place a monetary value on this contribution, and subsequently does not recognize volunteer time as incoming resources in the Financial Statements. IPPF does not believe there is a concise, workable, or accurate method of quantifying this contribution, or establishing how this contribution is expressed in financial terms.

Resources expended and basis of allocation of costs

Grants payable to Member Associations of cash and commodities (being contraceptives and related goods) represent direct aid to affiliated and non-affiliated organizations. These grants are given on an annual basis. Amounts not yet given at the year end relating to commodities are accrued for as liabilities on the basis that a commitment exists to supply these remaining commodities or cash.

Expenditure other than Grants is classified between Regional and Central activities. Regional activities are those carried out by the Regional Offices serving local Member Associations. Central activities are exclusively, those of the Central Office, London, which serve IPPF as a whole.

Costs of generating voluntary income comprise the costs incurred in commercial trading activities and fundraising. Fundraising costs include all direct costs including personnel costs, publicity material and direct mailing material.

Programme activities represent expenses directly attributable to the issuing or monitoring of grants to Member Associations as well as providing technical assistance to allow the grant recipients to implement programmes effectively. At the Regional Offices most staff will be involved as focal points for a selected number of Associations as well as being an expert in a technical area e.g. HIV/AIDs, Access, Accreditation etc. At the Central Office staff generally provide technical support to Regional Office staff and indirectly to Associations.

Support costs represent expenses on activities that are not directly attributable to the issuing or monitoring of grants to Member Associations and include general management, finance, office facilities, human resources and information technology.

Governance costs include the costs of governance arrangements relating to IPPF as a UK registered charity. Direct costs include internal and external audit, financial statement publication costs, legal advice for the Governing Council members and costs associated with constitutional and statutory requirements such as Governing Council meetings as well as the supporting committee meetings. As a Federation, the costs associated with Regional governance structures (Regional Council Meetings and Regional Executive Meetings) are also included.

Where IPPF acts as an agent for another party upon specific projects, all costs and overheads recovered are netted off against those costs. Third

party arrangements are detailed in note 19. These include an arrangement whereby IPPF acts as a fiscal agent for White Ribbon Alliance for Safe Motherhood. The value of cash held on behalf of this organisation is included on IPPF's balance sheet, within Cash at Bank and Accruals and other Creditors.

Where overheads on IPPF's own projects are recovered by way of donations and grants, these and their related costs are not netted off but are shown separately.

Deferred income

Deferred income comprises amounts received in the period which the donor has given for use in future accounting periods only. Other forms of income, such as lease benefits, are also deferred in order to match the income with the periods that they are intended to benefit.

Fixed assets

All assets costing more than \$1,000 are capitalized. All assets are stated at cost. All assets are depreciated in line with their expected useful lives using the straight line method at the following rates:

Land	no depreciation
Freehold buildings	2%
Office furniture	10%
Office equipment	20%
Computer hardware	33%
Vehicles	33%
Freehold improvements	10%
Leasehold improvements	Period of lease

Any realized gains or losses on disposals of fixed assets are taken to the Statement of Financial Activities in the year in which they occur.

Investments

Investments are valued at market value as at 31 December 2008. All gains and losses are taken to the Statement of Financial Activities as they arise.

Stock of goods

Stock is valued at the lower of cost and net realizable value and consists of contraceptives and related medical equipment.

Foreign currency

Transactions in foreign currencies are recorded using the rate of exchange ruling at the date of the transaction. Monetary assets and liabilities denominated in foreign currencies are translated using the rate of exchange ruling at the balance sheet date, and the gains and losses on translation are included in the statement of financial activities.

The results from overseas branches with operations denominated in foreign currency are translated into US Dollars at the average rate of exchange during the year for the statement of financial activities, and the year end rate for the assets and liabilities. Gains and losses arising on these translations are taken to the General Reserve.

Leased assets

The annual payments in relation to lease arrangements, known as operating leases, are charged to the Statement of Financial Activities on an accruals basis.

Provisions

Provision is made, where material, for the present value of future liabilities and losses which have occurred during the financial year and up to the date on which the financial statements are approved by Governing Council. The recognition of a provision is in accordance with FRS 12 'Provisions, Contingent Liabilities and Contingent Assets'. The charge for a provision is made against the appropriate resources expended category to which it relates.

Contingent liabilities

Contingent liabilities are disclosed in accordance with FRS 12, 'Provisions, Contingent Liabilities and Contingent Assets'. No recognition is made in the Statement of Financial Activities. Where it becomes probable that there will be a future outflow of resources the liability will cease to be contingent and is accrued in the financial statements. Full details on each contingent liability are disclosed in note 18.

Pension contributions

IPPF contributes to both a closed, defined benefit scheme and a number of defined contribution pension schemes (see note 20).

Defined contribution scheme costs are charged to the Statement of Financial Activities as they are incurred.

IPPF makes contributions to the Central Office defined benefit pension scheme (closed to new members from 1 September 2003 and current members from 1 September 2007) based on the advice from triennial actuarial valuations. Any material deficiencies or surpluses that arise are dealt with by changes to the level of contributions. In accordance with FRS 17 'Retirement Benefits', the Statement of Financial Activities includes: the cost of benefits accruing during the year in respect of current and past service (charged against net outgoing resources); the expected return on the scheme's assets and the increase in the present value of the scheme's liabilities arising from the passage of time (shown as pensions finance charge); actuarial gain recognized in the pension scheme (shown within net movement of funds). The balance sheet includes the deficit in the scheme taking assets at their year-end market value and liabilities at their actuarially calculated values.

Funds

IPPF maintains five types of fund:

- Permanent Endowment – where the capital is held in perpetuity to generate income to further the charitable objects of IPPF;
- Restricted – where the purposes for which the funds can be used have been restricted by donors or the terms of an appeal;
- Pension Reserve – in accordance with FRS 17 'Retirement Benefits', the liability attributed to the Central Office Defined Benefit Scheme is shown as a separate fund. As the scheme is currently in deficit this is a negative reserve. No designation of unrestricted funds to meet pension commitments at the balance sheet date is in place as IPPF anticipates meeting such commitments through future cash flows.
- Designated – where the funds are unrestricted, but where the Governing Council have designated them for a specific purpose;
- Unrestricted – where the funds are not restricted as to use but may be applied for any purpose within the charity's objects.

Transfers between funds are made where the donor restrictions allow with appropriate disclosure in note 16.

2 Grants from governments

	Local currency (LC)	2008 LC'000	2007 LC'000	2008 \$'000	2007 \$'000
Unrestricted					
Australia	Australian \$	2,750	2,250	2,573	1,744
Barbados	US \$	—	4	—	4
Canada	Canadian \$	6,000	6,000	5,620	5,530
China	US \$	160	160	160	160
Denmark	Danish Krone	40,000	40,000	8,355	7,440
Finland	Euro	800	600	1,241	818
Germany	Euro	3,000	3,000	4,655	4,142
Japan	US \$	11,322	11,705	11,322	11,705
South Korea	US \$	72	100	72	100
Malaysia	US \$	15	15	15	15
The Netherlands	Euro	4,000	4,311	6,074	5,767
New Zealand	New Zealand \$	2,000	1,300	1,582	919
Norway	Norwegian Krone	40,000	40,000	7,593	6,762
Sweden	Swedish Krona	110,000	95,000	15,970	14,739
Switzerland	Swiss Franc	1,000	1,000	944	797
Thailand	US \$	2	2	2	2
United Kingdom	£ Sterling	6,350	7,500	11,432	14,927
Unrestricted				77,610	75,571
Restricted					
Australia	Australian \$	1,737	1,333	1,234	1,177
Denmark	Danish Kroner	2,069	4,659	432	901
Finland	Euro	84	95	113	129
Germany	Euro	381	563	554	763
Japan	US \$	1,022	1,022	1,022	1,022
States of Jersey	£ Sterling	—	51	—	100
South Korea	US \$	250	750	250	750
The Netherlands	Euro	3,000	60	4,200	81
New Zealand	New Zealand \$	250	—	232	—
Norway	Norwegian Krone	—	10,000	—	1,636
Spain	Euro	116	—	169	—
Sweden	Swedish Krona	(143)	10,000	(18)	1,444
United Kingdom	£ Sterling	3,378	1,602	5,765	3,157
Restricted				13,953	11,160
Total restricted and unrestricted grants from governments				91,563	86,731

3 Grants from multilaterals and other income sources

	Unrestricted \$'000	Restricted \$'000	2008 Total \$'000	2007 Total \$'000
Arab Gulf Fund United Nations Development Programme	—	80	80	120
Big Lottery Fund	—	6	6	215
Erik E & Edith H Bergstrom Foundation	—	359	359	518
Fred B. Bixby Foundation	—	—	—	35
Harry & Julia A Brahamson Fund	—	—	—	200
Compton Foundation	10	10	20	35
Elton John AIDS Foundation	—	54	54	55
European Commission (EC)	—	557	557	3,940
Ford Foundation	—	318	318	106
Bill & Melinda Gates Foundation	—	1,784	1,784	3,809
Good Gifts	—	33	33	75
Gesellschaft fur Technische Zusammenarbeit (GTZ)	—	26	26	7
The William & Flora Hewlett Foundation	1,725	2,450	4,175	2,550
International Federation Of Red Cross	—	8	8	12
International HIV/AIDS Alliance	—	—	—	25
Intrahealth	—	—	—	25
IPAS Fund	—	30	30	15
Libra Foundation	50	5	55	50
Liz Claiborne & Art Ortenberg Foundation	20	—	20	20
The John D & Catherine T MacArthur Foundation	—	351	351	340
MAC AIDS Fund	—	227	227	—
Management Sciences for Health (MSH)	—	—	—	25
New World Foundation	3	—	3	—
Nike Foundation	—	—	—	42
Overbrook Foundation	40	—	40	40
David & Lucile Packard Foundation	—	—	—	1,092
Pathfinder	—	—	—	25
Population Action International (PAI)	—	1,538	1,538	452
Program for Appropriate Technology in Health (PATH)	—	—	—	20
Louise & Harold Price Foundation	—	50	50	50
The Prospect Hill Foundation	—	35	35	—
The Scherman Foundation	30	—	30	—
The Summit Foundation	—	60	60	113
The World Conservation Union	—	—	—	25
United Nations Foundation (UNF)	—	68	68	—
United Nations Fund for Population Activities (UNFPA)	—	783	783	1,024
United Nations Programme on HIV/AIDS (UNAIDS)	—	221	221	1,675
West African Health Organisation	—	—	—	5
Westwind Foundation	100	75	175	63
World Health Organization (WHO)	—	—	—	10
Anonymous (not to be disclosed at their request)	750	7,372	8,122	7,274
Legacies	1,009	—	1,009	1,305
Other <\$5,000, or individuals not wishing to be disclosed	2,761	14	2,775	3,533
Total	6,498	16,514	23,012	28,925

4 Investment income and interest

	Unrestricted \$'000	Restricted \$'000	2008 Total \$'000	2007 Total \$'000
Interest receivable from cash deposits	1,501	394	1,895	2,404
Dividends and similar income from US listed securities	232	—	232	79
Total	1,733	394	2,127	2,483

5 Grants to Member Associations and partner organizations

	Unrestricted			Restricted			
	2008 Cash grants \$'000	2008 Commodity grants \$'000	2008 Technical assistance \$'000	2008 Cash grants \$'000	2008 Commodity grants \$'000	2008 Total \$'000	2007 Total \$'000
Africa	16,611	1,369	1,957	5,207	197	25,341	22,560
Arab World	3,151	227	298	635	41	4,352	4,556
E & SE Asia and Oceania	4,908	722	–	1,567	–	7,197	6,855
Europe	1,946	–	53	2,296	–	4,295	3,286
South Asia	7,438	9	–	2,625	–	10,072	8,940
Western Hemisphere	6,876	1,307	1,231	10,726	48	20,188	15,573
Total 2008	40,930	3,634	3,539	23,056	286	71,445	61,770
Total 2007	38,180	4,502	2,464	16,298	326		

Commodity grants consist of contraceptives and related goods.

Technical assistance represents advisory services provided by IPPF and funded by Member Associations from unrestricted core grants and locally generated income sources.

Negative values arise where amounts accrued in previous years at the year end are reversed/paid in the following year at a lower value.

Grants to Member Associations and partner organizations by IPPF strategic priorities and supporting strategies

	2008 Unrestricted \$'000	2008 Restricted \$'000	2008 Total \$'000	2007 Total \$'000
Strategic priorities				
Adolescents	5,641	1,308	6,949	7,563
HIV/AIDS	2,966	2,705	5,671	4,642
Access	23,391	3,264	26,655	23,262
Abortion	2,270	11,114	13,384	10,240
Advocacy	4,071	4,496	8,567	5,930
Supporting strategies				
Accreditation & Governance	3,424	–	3,424	3,473
Resource mobilization	1,782	–	1,782	1,889
Capacity building	3,591	452	4,043	3,568
Evaluation	967	3	970	1,203
Total	48,103	23,342	71,445	61,770

The above figures are based on funding agreements. They are indicative in the sense that ensuring global standards of classifying projects is still something IPPF is refining. For example a Member Association undertaking projects to increase clinical services to young people and with an emphasis on HIV/AIDS prevention will generally classify this as 'access'. This can lead to other priority areas being lower than expected.

5 Grants to Member Associations and partner organizations (continued)

The following associations received cash and commodity grants as shown below. They are ranked in order of total unrestricted grants.

Rank	Country	Association	Unrestricted \$	Restricted \$	Total \$
1	India	Family Planning Association of India	1,899,592	738,193	2,637,785
2	Pakistan	Rahnuma-Family Planning Association of Pakistan	1,831,229	25,000	1,856,229
3	Nepal	Family Planning Association of Nepal	1,545,486	591,464	2,136,950
4	Bangladesh	Family Planning Association of Bangladesh	1,438,283	689,313	2,127,596
5	Nigeria	Planned Parenthood Federation of Nigeria	1,039,696	(81,470)	958,226
6	Tanzania	Uzazi na Malezi Bora Tanzania	919,081	208,944	1,128,025
7	Uganda	Reproductive Health Uganda	878,262	587,865	1,466,127
8	Ghana	Planned Parenthood Association of Ghana	859,570	288,801	1,148,371
9	Ethiopia	Family Guidance Association of Ethiopia	842,152	10,094	852,246
10	Kenya	Family Health Options Kenya	817,724	65,750	883,474
11		Caribbean Family Planning Affiliation comprising of:			
	Antigua	– Antigua Planned Parenthood Association	85,332	0	85,332
	Aruba	– Foundation for the Promotion of Responsible Parenthood	22,493	0	22,493
	Bahamas	– Bahamas Family Planning Association	21,353	0	21,353
	Caribbean	– Caribbean Family Planning Affiliation Ltd	215,124	0	215,124
	Curacao	– Foundation for the Promotion of Responsible Parenthood	31,736	0	31,736
	Dominica	– Dominica Planned Parenthood Association	97,618	15,000	112,618
	Grenada	– Grenada Planned Parenthood Association	81,577	0	81,577
	St. Lucia	– Saint Lucia Planned Parenthood Association	157,531	150,001	307,532
	St. Vincent	– St. Vincent Planned Parenthood Association	59,166	0	59,166
12	Zambia	Planned Parenthood Association of Zambia	756,621	0	756,621
13	Sudan	Sudan Family Planning Association	718,555	185,521	904,076
14	Dominican Republic	Asociación Dominicana Pro-Bienestar de la Familia	681,059	241,705	922,764
15	Burkina Faso	Association Burkinabé pour le Bien-Etre Familial	666,118	115,377	781,495
16	Egypt	Egyptian Family Planning Association	653,423	0	653,423
17	Mexico	Fundación Mexicana para la Planeación Familiar, A.C.	606,520	1,816,207	2,422,727
18	Senegal	Association Sénégalaise pour le Bien-Être Familial	604,572	0	604,572
19	Brazil	Sociedade Civil Bem-Estar Familiar no Brasil	597,283	108,350	705,633
20	Madagascar	Fianakaviana Sambatra	579,802	3,527	583,329
21	Haiti	Association pour la Promotion de la Famille Haïtienne	575,353	19,810	595,163
22	Colombia	Asociación Pro-Bienestar de la Familia Colombiana	572,220	626,736	1,198,956
23	Peru	Instituto Peruano de Paternidad Responsable	556,950	973,857	1,530,807
24	Togo	Association Togolaise pour le Bien-Etre Familial	553,220	102,853	656,073
25	Congo, Dem. Republic	Association pour le Bien-Etre Familial/Naissances Désirables	547,030	0	547,030
26	Sierra Leone	Planned Parenthood Association of Sierra Leone	522,728	535,699	1,058,427
27	Cameroon	Cameroon National Association for Family Welfare	522,554	92,412	614,966
28	Lesotho	Lesotho Planned Parenthood Association	514,091	37,327	551,418
29	Benin	Association Béninoise pour la Promotion de la Famille	511,366	0	511,366
30	Bolivia	Centro de Investigación, Educación y Servicios	507,289	865,487	1,372,776
31	The Gambia	Gambia Family Planning Association	502,082	63,065	565,147
32	Mali	Association Malienne pour la Protection et la Promotion de la Famille	501,182	38,320	539,502
33	Palestine	Palestinian Family Planning and Protection Association	489,837	0	489,837
34	Ivory Coast	Association Ivoirienne pour le Bien-Etre Familial	481,495	0	481,495
35	Guatemala	Asociación Pro-Bienestar de la Familia de Guatemala	470,466	615,148	1,085,614

Rank	Country	Association	Unrestricted \$	Restricted \$	Total \$
36	Niger	Association Nigérienne pour le Bien-Etre Familial	470,138	0	470,138
37	Mozambique	Associação Moçambicana para Desenvolvimento da Família	464,834	3,373	468,207
38	Congo	Association Congolaise pour le Bien-Etre Familial	422,499	(11,390)	411,109
39	Paraguay	Centro Paraguayo de Estudios de Población	414,377	0	414,377
40	Venezuela	Asociación Civil de Planificación Familiar	411,831	228,662	640,493
41	China	China Family Planning Association	406,903	26,500	433,403
42	Gabon	Mouvement Gabonais pour le Bien-Etre Familial	404,938	0	404,938
43	Liberia	Family Planning Association of Liberia	404,410	0	404,410
44	Nicaragua	Asociación Pro-Bienestar de la Familia Nicaragüense	397,639	665,583	1,063,222
45	Afghanistan	Afghan Family Guidance Association	395,969	183,208	579,177
46	Philippines	Family Planning Organization of the Philippines	395,609	1,503	397,112
47	Burundi	Association Burundaise pour le Bien-Etre Familial	393,072	98,909	491,981
48	Guinea-Conakry	Association Guinéenne pour le Bien-Etre Familial	378,399	0	378,399
49	Rwanda	Association Rwandaise pour le Bien-Etre Familial	365,316	(8,317)	356,999
50	Honduras	Asociación Hondureña de Planificación de Familia	363,935	81,226	445,161
51	Malawi	Family Planning Association of Malawi	342,088	331,419	673,507
52	Central African Republic	Association Centrafricaine pour le Bien-Etre Familial	341,293	0	341,293
53	Indonesia	The Indonesian Planned Parenthood Association	341,063	493,117	834,180
54	Chad	Association Tchadienne pour le Bien-Etre Familial	340,605	86,546	427,151
55	Botswana	Botswana Family Welfare Association	328,479	0	328,479
56	Malaysia	Federation of Family Planning Associations of Malaysia	327,921	0	327,921
57	Morocco	Association Marocaine de Planification Familiale	316,243	0	316,243
58	Syria	Syrian Family Planning Association	309,672	120,518	430,190
59	Swaziland	Family Life Association of Swaziland	298,870	332,769	631,639
60	Mauritania	Association Mauritanienne pour la Promotion de la Famille	297,157	207,280	504,437
61	El Salvador	Asociación Demográfica Salvadoreña	296,246	73,625	369,871
62	Namibia	Namibia Planned Parenthood Association	294,392	104,253	398,645
63	Trinidad and Tobago	Family Planning Association of Trinidad and Tobago	291,145	(122,205)	168,940
64	Tunisia	Association Tunisienne de la Santé de la Reproduction	282,121	0	282,121
65	Russia	Russian Family Planning Association	262,554	0	262,554
66	Angola	Associação Angolana para o Bem Estar da Família	254,156	0	254,156
67	Guinea-Bissau	Associação da Guiné-Bissau Para a Educação e Promoção de Saúde Familiar	250,756	2,340	253,096
68	Comoros	Association Comorienne pour le Bien-Etre de la Famille	238,497	0	238,497
69	Thailand	Planned Parenthood Association of Thailand	237,364	0	237,364
70	Belize	Belize Family Life Association	231,532	295,065	526,597
71	Algeria	Association Algérienne pour la Planification Familiale	228,042	0	228,042
72	Iran	Family Planning Association of the Islamic Republic of Iran	225,119	0	225,119
73	Vietnam	Vietnam Family Planning Association	221,858	96,323	318,181
74	Bulgaria	Bulgarian Family Planning and Sexual Health Association	219,786	0	219,786
75	Ecuador	Centro Ecuatoriano para la Promoción y Acción de la Mujer de Guayaquil, Ecuador	217,899	201,850	419,749
76	Solomon Islands	Solomon Islands Planned Parenthood Association	206,320	36,729	243,049
77	Suriname	Stichting Lobi	198,487	0	198,487
78	Cape Verde	Associação Caboverdiana para a Proteção da Família	198,006	0	198,006
79	Vanuatu	Vanuatu Family Health Association	177,762	40,342	218,104

5 Grants to Member Associations and partner organizations (continued)

Rank	Country	Association	Unrestricted \$	Restricted \$	Total \$
80	Guyana	Guyana Responsible Parenthood Association	176,497	0	176,497
81	Samoa	Samoa Family Health Association	172,210	38,323	210,533
82	Djibouti	Association Djiboutienne pour l'équilibre et la promotion de la Famille	171,181	0	171,181
83	Tuvalu	Tuvalu Family Health Association	167,266	44,027	211,293
84	Jamaica	Jamaica Family Planning Association	162,103	26,500	188,603
85	Chile	Asociación Chilena de Protección de la Familia	157,803	0	157,803
86	Mongolia	Mongolian Family Welfare Association	154,889	90,272	245,161
87	Armenia	FOR FAMILY AND HEALTH Pan-Armenian Association	149,708	0	149,708
88	Bosnia and Herzegovina	Association for Sexual and Reproductive Health XY	145,415	0	145,415
89	Cuba	Sociedad Científica Cubana Para el Desarrollo de la Familia	142,105	119	142,224
90	Tonga	Tonga Family Health Association	141,439	31,884	173,323
91	Kazakhstan	Kazakhstan Association on Sexual and Reproductive Health	140,830	75,531	216,361
92	Korea, Republic of	Planned Population Federation of Korea	135,401	0	135,401
93	Korea, Dem. People's Rep of	Korean Family Planning & Maternal Child Health Association of DPRK	135,195	0	135,195
94	Fiji	Reproductive & Family Health Association of Fiji	128,723	29,280	158,003
95	Costa Rica	Asociación Demográfica Costarricense	128,156	49,624	177,780
96	Cook Islands	Cook Islands Family Welfare Association	122,489	27,979	150,468
97	Uzbekistan	Uzbek Association on Reproductive Health	117,716	0	117,716
98	Panama	Asociación Panameña para el Planeamiento de la Familia	117,370	173,668	291,038
99	Mauritius	Mauritius Family Planning & Welfare Association	116,246	0	116,246
100	Yemen	Yemen Family Care Association	112,786	0	112,786
101	Hong Kong	Family Planning Association of Hong Kong	112,680	0	112,680
102	Bahrain	Bahrain Reproductive Health and Family Planning Association	90,549	0	90,549
103	Kyrgyzstan	Reproductive Health Alliance of Kyrgyzstan	85,535	124,151	209,686
104	Georgia	Association HERA XXI	84,618	0	84,618
105	Uruguay	Asociación Uruguaya de Planificación Familiar	82,915	(47,896)	35,019
106	Tajikistan	Tajik Family Planning Alliance	79,472	0	79,472
107	Puerto Rico	Asociación Puertorriqueña Pro-Bienestar de la Familia	76,912	1,350,000	1,426,912
108	France*	Mouvement Français pour le Planning Familial	76,583	25,000	101,583
109	Albania	Shoqata Shqiptare per Popullsinë dhe Zhvillimin/ Albanian Center for Population and Development	75,548	131,540	207,088
110	Latvia	Latvijas ģimenes plānošanas un seksuālās veselības asociācija	72,646	0	72,646
111	New Zealand*	New Zealand Family Planning	71,062	0	71,062
112	Singapore	Singapore Planned Parenthood Association	70,066	1,792	71,858
113	Northern Ireland*	The Family Planning Association of Northern Ireland	68,586	0	68,586
114	Portugal*	Associação Para o Planeamento da Família	68,288	52,566	120,854
115	Sri Lanka	Family Planning Association of Sri Lanka	60,581	13,813	74,394
116	Moldova	Societatea de Planificare a Familiei din Moldova	58,666	0	58,666
117	Ireland	Irish Family Planning Association	58,415	88,392	146,807
118	Maldives	Society for Health Education	50,000	0	50,000
119	Barbados	The Barbados Family Planning Association	49,495	0	49,495
120	Lithuania	Seimos Planavimo ir Seksualinės Sveikatos Asociacija	47,823	905	48,728
121	Romania	Societatea de Educatie Contraceptiva si Sexuala	47,004	0	47,004

Rank	Country	Association	Unrestricted \$	Restricted \$	Total \$
122	Poland	Towarzystwo Rozwoju Rodziny	30,000	40,000	70,000
123	The Former Yugoslav Republic of Macedonia	Health Education and Research Association	30,000	0	30,000
124	Eritrea	Family Reproductive Health Association of Eritrea	29,644	0	29,644
125	Germany*	PRO FAMILIA Bundesverband	25,000	40,000	65,000
126	Canada*	Canadian Federation for Sexual Health	15,957	0	15,957
127	Various	Grants below \$5,000	9,504	2,195	11,699
128	Turkey*	Türkiye Aile Planlamasi Dernegi	8,083	0	8,083
129	Cyprus*	Family Planning Association of Cyprus	7,324	0	7,324
130	Norway	Norsk forening for seksuell og reprodutiv helse og rettigheter	0	227,663	227,663
131	Denmark	Sex & Samfund – The Danish Family Planning Association	0	135,271	135,271
132	Finland	Väestöliitto	0	135,271	135,271
133	Spain	Federación de Planificación Familiar de España	0	100,107	100,107
134	Austria	Österreichische Gesellschaft für Familienplanung	0	48,392	48,392
135	Switzerland	Fondation Suisse pour la Santé Sexuelle et Reproductive	0	42,585	42,585
Total Grants to Member Associations			45,038,607	16,398,538	61,437,145

*Non-grant receiving associations in receipt of non-recurrent unrestricted funding in 2008.

5 Grants to other organizations

The following organizations received cash and commodity grants as shown below. This list includes organizations where IPPF are requested by donors to act as a Secretariat for their funds and issue grants to groups they have identified.

Rank	Country	Partner	Unrestricted \$	Restricted \$	Total \$
1		Japanese Organisation for International Cooperation in Family Planning (JOICFP)			
	China	– Grants to organizations in China	110,000	0	110,000
	Africa (Various)	– Grants to organizations in Sub-Saharan Africa	100,000	0	100,000
	Japan	– Information & Campaigning	260,000	0	260,000
	Japan	– International Advocacy / Resource Mobilization	830,000	0	830,000
2	Papua New Guinea*	Papua New Guinea Family Health Association	252,800	57,910	310,710
3	Kenya	Centre for African Family Studies	200,000	0	200,000
4	South Africa	Planned Parenthood Association of South Africa	196,380	0	196,380
5	Kiribati*	Kiribati Family Health Association	179,832	40,992	220,824
6	Laos*	Lao Field Office	170,487	0	170,487
7	Various	Other organizations (Grants below \$5,000 and requests to withhold public disclosure)	159,446	14,284	173,730
8	Zimbabwe*	Zimbabwe National Family Planning Council	158,634	0	158,634
9	Sao Tome & Principe*	Associação Santomense para o Planeamento Familiar	118,571	1,148	119,719
10	Seychelles*	Alliance of Solidarity for the Family	80,756	0	80,756
11	Mexico	Investigacion en Salud y Demografia, S.C. (INSAD)	32,305	32,305	64,610
12	Africa	Association of Chief Executives of Member Associations	31,436	0	31,436
13	Ukraine*	NGO Women Health and Family Planning	30,000	0	30,000
14	Nigeria	IPPF support for the 3rd African Federation of SRH conference	30,000	0	30,000
15	Argentina	FEIM – Argentina	23,150	0	23,150
16	Argentina	Fundacion para la Salud del Adolescente (FUSA)	20,700	0	20,700
17	USA	Inter-American Parliamentary Group on Population & Development	20,000	0	20,000
18	Various	Non-Profit Organizations Knowledge Initiative – NPOKI	10,000	105,787	115,787
19	Kenya	Kenya Redcross	10,000	0	10,000
20	USA	Trustees of Columbia University-NYC	9,062	0	9,062
21	Mexico	Balance, Promocion-Desarrollo y Juventud	7,700	2,000	9,700
22	Mexico	Catolicas por el Derecho a Decidir	7,000	281,000	288,000
23	Tunisia	Avenir Sportif de la Marsa	6,000	0	6,000
24	Spain	Women's Link Worldwide	5,000	89,240	94,240
25	United Kingdom	All Party Parliamentary Group on Population, Development & Reproductive Health	5,000	15,000	20,000
26	Kenya/Swaziland/Malawi	Population Council	0	1,086,867	1,086,867
27	Colombia	Fundacion Educacion para Salud Reproductiva	0	307,303	307,303
28	Colombia	Orientame	0	168,032	168,032
29	Kenya	Kisumu Medical and Education Trust (KMET)	0	167,403	167,403
30	Colombia	Fundación Educación para la Salud Reproductiva	0	164,607	164,607
31	Nigeria	Planned Parenthood Federation of America-International – Nigeria	0	163,691	163,691
32	Uganda	Marie Stopes International – Uganda	0	161,294	161,294
33	Mexico	Grupo de Información en Reproducción Elegida	0	156,034	156,034
34	South Africa	Pathfinder International – South Africa	0	155,177	155,177
35	South Africa	Ibis Reproductive Health, South Africa	0	154,406	154,406
36	Vietnam	Marie Stopes International – Viet Nam	0	151,715	151,715
37	Argentina	Católicas por el Derecho a Decidir (CDD) Córdoba, Argentina	0	145,523	145,523
38	Uruguay	Iniciativas Sanitarias	0	145,276	145,276
39	Bangladesh	Bangladesh Women's Health Coalition	0	144,828	144,828

Rank	Country	Partner	Unrestricted \$	Restricted \$	Total \$
40	Belgium	European Parliamentary forum on Population & Development	0	135,271	135,271
41	The Netherlands	World Population Foundation	0	135,271	135,271
42	France	Equilibres & Populations	0	135,271	135,271
43	Germany	Deutsche Stiftung Weltbevölkerung (DSW)	0	135,271	135,271
44	Ghana	Pathfinder International – Ghana	0	134,288	134,288
45	UK	Interact Worldwide	0	132,377	132,377
46	Nigeria	Women's Health & Action Research Centre	0	123,057	123,057
47	Sudan	PPFA International – Sudan	0	117,523	117,523
48	Nepal	Sunaulo Parivar Nepal (MSI)	0	116,017	116,017
49	Brazil	Center for Research in Reproductive Health of Campinas	0	114,186	114,186
50	Brazil	Feminist Center for Studies and Advisory Services	0	109,270	109,270
51	Africa	Ipas Africa	0	104,910	104,910
52	Japan	Asian Population and Development Association	0	100,000	100,000
53	Ethiopia	Marie Stopes International – Ethiopia	0	96,993	96,993
54	Brazil	Cunhã Coletivo Feminista	0	96,728	96,728
55	Chile	Red de Salud de las mujeres Latinoamericanas y del Caribe	0	93,898	93,898
56	Thailand	The Royal Thai College of Obstetricians and Gynaecologists	0	93,246	93,246
57	Mexico	Comunicación, Intercambio y Desarrollo Humano en América Latina	0	81,798	81,798
58	Philippines	General Assembly Binding Women for Reforms, Integrity, Equality, Leadership and Action	0	76,478	76,478
59	Nepal	Center for Research on Environment Health and Population Activities	0	74,091	74,091
60	Belgium	Sensoa VZW	0	73,392	73,392
61	Belgium	Marie Stopes International – Belgium	0	68,655	68,655
62	Uruguay	Iniciativas Sanitarias	0	67,152	67,152
63	United Kingdom	Marie Stopes International	0	66,616	66,616
64	Mexico	Centro de Atención Integral a la Pareja, A. C.	0	55,993	55,993
65	The Netherlands	Rutgers Nisso Groep	0	50,054	50,054
66	Italy	Unione Italiana dei Centri di Educazione Matrimoniale e Prematrimoniale	0	47,593	47,593
67	Argentina	Centro de Estudios de Estado y Sociedad	0	46,985	46,985
68	Various	Global Network of People Living with HIV/AIDS	0	45,045	45,045
69	Pakistan	Association of People Living with HIV & AIDS	0	45,000	45,000
70	Uruguay	Mujer y Salud en Uruguay	0	37,284	37,284
71	Thailand	Asian Forum of Parliamentarians on Population & Development	0	35,000	35,000
72	Thailand	Foundation for AIDS Rights	0	32,000	32,000
73	Belgium	Inter-European Parliamentary Forum on Population & Development	0	30,000	30,000
74	Nigeria	Health Reform Foundation of Nigeria	0	23,524	23,524
75	Thailand	Mae Tao Clinic	0	23,479	23,479
76	USA	Institute for Global Health	0	20,000	20,000
77	Swaziland	Population Services International	0	18,829	18,829
78	USA	Population Council	0	15,000	15,000
79	Dominican Republic	Living Lens	0	11,934	11,934
80	Columbia	Liga Columbiana de Lucha Contra el Sida	0	7,624	7,624
81	Argentina	Centro de Estudios Sociales y Políticos para el Desarrollo Humano	0	5,167	5,167
Total Grants to Partner Organizations			3,064,259	6,944,092	10,008,351
Total Grants to Member and Partner Organizations			48,102,866	23,342,630	71,445,496

6 Regional activities – 2008

	Unrestricted					
	(1) Programme activities \$'000	(2) Support costs \$'000	Charitable activities Sub total \$'000	(3) Regional fundraising \$'000	Restricted Programme activities \$'000	Total \$'000
Personnel costs	7,318	2,201	9,519	677	3,066	13,262
Consultancies	927	168	1,095	276	2,159	3,530
Travel	2,090	83	2,173	154	2,551	4,878
Occupancy	339	641	980	97	533	1,610
Communications	392	283	675	696	96	1,467
Other costs	548	669	1,217	52	776	2,045
Total 2008	11,614	4,045	15,659	1,952	9,181	26,792

1) Programme activities represent expenses directly attributable to the issuing or monitoring of grants to Member Associations as well as providing technical assistance to allow the grant recipients to implement programmes effectively. At the Regional Offices most staff will be involved as focal points for a selected number of Associations as well as being an expert in a technical area e.g. HIV/AIDs, Access, Accreditation etc.

Regional activities by IPPF strategic priorities and supporting strategies – 2008

	Total Support costs \$'000	Programme activities \$'000	Regional fundraising \$'000	Total \$'000
Strategic Priorities				
Adolescents	282	1,777	–	2,059
HIV/AIDS	362	3,525	–	3,887
Access	530	1,855	–	2,385
Abortion	340	1,858	–	2,198
Advocacy	544	3,531	–	4,075
Supporting Strategies				
Accreditation & governance	395	1,395	–	1,790
Resource mobilization	295	277	1,952	2,524
Capacity building	1,060	5,775	–	6,835
Evaluation	237	802	–	1,039
Total 2008	4,045	20,795	1,952	26,792

6 Regional activities – 2007

	Unrestricted				Restricted	
	(1) Programme activities \$'000	(2) Support costs \$'000	Charitable activities Sub total \$'000	(3) Regional fundraising \$'000	Programme activities \$'000	Total \$'000
Personnel costs	6,905	2,297	9,202	472	2,343	12,017
Consultancies	836	139	975	135	850	1,960
Travel	2,249	710	2,959	40	1,805	4,804
Occupancy	695	742	1,437	129	73	1,639
Communications	220	207	427	186	74	687
Other costs	325	(128)	197	479	1,080	1,756
Total 2007	11,230	3,967	15,197	1,441	6,225	22,863

2) Support costs represent expenses on activities that are not directly attributable to the issuing or monitoring of grants to Member Associations and include general management, finance, office facilities, human resources and information technology. These are allocated across the Strategic Priorities and Supporting Strategies based on a proportion of direct personnel costs attributable to the implementation of the activities. This is the methodology used as part of the budget cycle in order to correctly measure the overall costs of undertaking projects on the internal electronic Integrated Management System. This methodology is applied to all areas of the IPPF and has been selected for consistency of use and ease of implementation.

3) Fundraising costs comprise of activities related to Regional income generation and resource development.

Regional activities by IPPF strategic priorities and supporting strategies – 2007

	Total Support costs \$'000	Programme activities & support \$'000	Regional fundraising \$'000	Total \$'000
Strategic priorities				
Adolescents	344	1,841	–	2,185
HIV/AIDS	420	2,111	–	2,531
Access	557	1,972	–	2,529
Abortion	341	1,491	–	1,832
Advocacy	377	2,956	–	3,333
Supporting strategies				
Accreditation & governance	360	1,521	–	1,881
Resource mobilization	190	89	1,441	1,720
Capacity building	1,095	4,596	–	5,691
Evaluation	283	878	–	1,161
Total 2007	3,967	17,455	1,441	22,863

7 Central activities – 2008

	Unrestricted					
	(1) Programme activities \$'000	(2) Support costs \$'000	Charitable activities Sub total \$'000	(3) Central fundraising \$'000	Restricted Programme activities \$'000	Total \$'000
Personnel costs	3,774	2,300	6,074	1,321	1,513	8,908
Consultancies	61	710	771	25	603	1,399
Travel	161	209	370	118	489	977
Occupancy	1	323	324	–	1	325
Communications	51	99	150	25	69	244
Other costs	543	4,392	4,935	115	1,545	6,595
Total 2008	4,591	8,033	12,624	1,604	4,220	18,448

1) Programme activities represent expenses directly attributable to the issuing or monitoring of grants to Member Associations as well as providing technical assistance to allow the grant recipients to implement programmes effectively. At the Central Office staff are generally not involved in issuing grants to Associations but provide technical support to Regional Office staff and Associations.

Central activities by IPPF strategic priorities and supporting strategies – 2008

	Support costs \$'000	Programme activities & support \$'000	Central fundraising \$'000	Total \$'000
Strategic Priorities				
Adolescents	339	416	–	755
HIV/AIDS	989	1,719	–	2,708
Access	305	409	–	714
Abortion	1,116	1,290	–	2,406
Advocacy	1,604	2,088	–	3,692
Supporting Strategies				
Accreditation & governance	640	725	–	1,365
Resource mobilization	1,328	–	1,604	2,932
Capacity building	202	532	–	734
Evaluation	1,510	1,632	–	3,142
Total 2008	8,033	8,811	1,604	18,448

7 Central activities – 2007

	Unrestricted				Restricted	
	(1) Programme activities \$'000	(2) Support costs \$'000	Charitable activities Sub total \$'000	(3) Central fundraising \$'000	Programme activities \$'000	Total \$'000
Personnel costs	3,867	1,381	5,248	1,515	536	7,299
Consultancies	286	602	888	7	471	1,366
Travel	639	220	859	194	564	1,617
Occupancy	–	417	417	–	1	418
Communications	63	66	129	23	26	178
Other costs	386	1,083	1,469	32	292	1,793
Total 2007	5,241	3,769	9,010	1,771	1,890	12,671

2) Support costs represent all other expenses incurred in the running of IPPF, and are allocated across the Strategic Priorities and Supporting Strategies based on a proportion of direct personnel costs attributable the implementation of the activities. This is the methodology used as part of the budget cycle in order to correctly measure the overall costs of undertaking projects on the internal electronic Integrated Management System. This methodology is applied to all areas of the IPPF and has been selected for consistency of use and ease of implementation.

3) Fundraising costs comprise of activities related to the Federation's global income generation and resource development.

Central activities by IPPF strategic priorities and supporting strategies – 2007

	Support costs \$'000	Programme activities & support \$'000	Central fundraising \$'000	Total \$'000
Strategic Priorities				
Adolescents	223	439	–	662
HIV/AIDS	278	1,242	–	1,520
Access	226	366	–	592
Abortion	262	701	–	963
Advocacy	543	1,420	–	1,963
Supporting Strategies				
Accreditation & governance	416	739	–	1,155
Resource mobilization	970	–	1,771	2,741
Capacity building	233	473	–	706
Evaluation	618	1,751	–	2,369
Total 2007	3,769	7,131	1,771	12,671

8 Governance costs

	Unrestricted \$'000	Restricted \$'000	2008 Total \$'000	2007 Total \$'000
External audit fees	266	—	266	311
Other fees paid to external auditor (individual donor grant certificates)	11	1	12	54
Other audit/accountancy fees	170	25	195	33
Publishing financial statements	12	—	12	12
Cost of trustee meetings	2,289	—	2,289	2,111
Total	2,748	26	2,774	2,521

Cost of trustee meetings comprises:

	2008 Total \$'000	2007 Total \$'000
Air fares	861	654
Hotels	584	597
Per diems	126	202
Other	718	658
Total	2,289	2,111

	Frequency	Volunteers Attending	2008 Total \$'000	2007 Total \$'000
Governing Council	Twice per annum	32	551	498
Audit Committee	Twice per annum	6	55	36
Membership Committee	Twice per annum	7	86	78
Regional Councils	Once per annum	315	1,111	1,049
Regional Executive Committees	Twice per annum	52	379	355
Other	Ad-hoc		107	95
Total			2,289	2,111

The above costs are based on volunteer and staff costs associated with attending the meetings. The number of volunteers attending the meetings are indicated. Only the 32 Governing Council members are UK trustees of IPPF.

9 Employee numbers and emoluments

The average total number of staff employed during the year on full time contracts were:

	Central Office 2008	Regional Offices 2008	Total 2008
Technical Knowledge & Support	22	102	124
Strategic Planning, External Affairs, Advocacy & Communications	11	11	22
Management, Governance, Accreditation & Policy	16	21	37
Resource Mobilization	7	9	16
Support Services – Finance, Information Technology, Human Resources & Administration	18	71	89
Trading Subsidiary (ICON)	9	–	9
Total 2008	83	214	297
Total 2007	81	209	290

	2008 \$'000	2007 \$'000
The cost of employing these staff was:		
Gross salaries of individuals on IPPF payroll	16,340	15,394
Social security costs	1,704	1,703
Pension	1,567	85
Temporary staff employed through third party agencies	522	263
Other employee benefits	2,037	1,873
Staff employed through trading subsidiary	712	741
Total	22,882	20,059

9 Employee numbers and emoluments (continued)

	2008	2007
The numbers of staff whose emoluments were over \$100,000 (i.e. £60,000) fell into the following bands:		
\$100,000 to \$110,000	7	9
\$110,000 to \$120,000	6	6
\$120,000 to \$130,000	4	7
\$130,000 to \$140,000	6	3
\$140,000 to \$150,000	2	—
\$150,000 to \$160,000	—	2
\$160,000 to \$170,000	—	—
\$170,000 to \$180,000	1	—
\$180,000 to \$190,000	3	1
\$190,000 to \$200,000	1	—
\$200,000 to \$210,000	—	2
\$220,000 to \$230,000	3	2
\$230,000 to \$240,000	2	3
\$260,000 to \$270,000	—	1
\$270,000 to \$280,000	1	1
\$300,000 to \$310,000	1	1
\$340,000 to \$350,000	—	—
\$450,000 to \$460,000	1	—
\$470,000 to \$480,000	—	1

Contributions were made to defined benefit pension schemes on behalf of 11 higher paid employees (2007: 8) and contributions amounting to \$386,226 (2007: \$303,095) were made to defined contribution schemes on behalf of 24 higher paid employees (2007: 16).

No Ex-gratia payments were made during the year (2007: Nil)

No trustee received remuneration during the year (2007: Nil)

10 Tangible fixed assets (group and charity)

	Freehold property \$'000	Short leasehold property & improvements \$'000	Fixtures, fittings, equipment & computers \$'000	Total \$'000
Cost or valuation				
At 1 January 2008	9,815	1,366	4,206	15,387
Exchange adjustments	—	(4)	(21)	(25)
Additions	—	13	352	365
Disposals	—	—	(257)	(257)
At 31 December 2008	9,815	1,375	4,280	15,470
Depreciation and amortization				
At 1 January 2008	1,220	946	3,053	5,219
Exchange adjustments	—	(3)	(14)	(17)
Charge for the year	447	171	428	1,046
Released on disposal	—	—	(254)	(254)
At 31 December 2008	1,667	1,114	3,213	5,994
Net book values				
At 31 December 2008	8,148	261	1,067	9,476
At 31 December 2007	8,595	420	1,153	10,168

All tangible fixed assets are held for charity use.

Freehold property relates to land and buildings held in Kuala Lumpur and London. The Kuala Lumpur, Malaysia property was valued at 30 September 2006 by Jones Lang Wootton, external qualified valuers. The market value using the comparison method was RM7,800,000 (\$2,236,777). The London, UK property was valued at 20 November 2006 by Atisreal, external qualified valuers. The market value using the comparison method was £4,275,000 (\$6,187,079).

The above note includes US\$3,662 in respect of the trading Subsidiary, ICON. This is excluded from the charity balance sheet on page 24.

11 Investments (group and charity)

Listed on the American and New York Stock Exchanges

	Unrestricted \$'000	Restricted \$'000	Endowment \$'000	Total \$'000
Shares and securities at market value:				
At 1 January 2008	38,255	2,534	1,241	42,030
Additions	6,721	–	–	6,721
Disposal proceeds	(10,201)	(1,500)	–	(11,701)
Unrealized/realized gains for the year	(6,012)	(276)	(240)	(6,528)
At 31 December 2008	28,763	758	1,001	30,522

Shares and securities at historical cost:

At 31 December 2008	35,948	1,575	852	38,375
At 31 December 2007	35,096	1,575	852	37,523

The above figures include no cash held as part of the investment portfolio (2007: nil).

IPPF owns one £1 ordinary share in ICON Ltd. This wholly owned trading subsidiary is incorporated and registered in England and Wales. The principal activity of the subsidiary is the supply of commodity services and social marketing of contraceptives in conjunction with Member Associations.

Financial statements for the period ending 31 December 2008 have been prepared. The company ordinarily transfers its profits to IPPF via gift aid. The profit includes inter-company income from IPPF, which is eliminated from the IPPF consolidated financial statements. Due to the size of the profit no transfer will be made in 2009. Summary of the turnover and expenditure and its profit for the year:

	2008 \$'000	2007 \$'000
Turnover	4,342	2,716
Cost of sales	(2,868)	(1,696)
Gross profit	1,474	1,020
Total expenses	(1,467)	(1,005)
Profit on ordinary activities before taxation	7	15
Corporation tax	(3)	–
Profit on ordinary activities after taxation	4	15
Gift Aid to IPPF	–	–
Retained profit for the year	4	15

IPPF has a long term interest bearing loan of \$247,500 to ICON, repayable in 2010-2012. Interest receivable on the loans in the year amounted to \$16,088 (2007: \$14,850). These results have been adjusted on consolidation into IPPF's financial statements for intra-group transactions.

The aggregate amount of assets, liabilities and funds was:

	2008 \$'000	2007 \$'000
Assets	1,849	763
Liabilities	(1,767)	(687)
Funds	82	76

12 Long term loans (group and charity)

	Unrestricted \$'000	Restricted \$'000	2008 Total \$'000	2007 Total \$'000
Loans to Member Associations	211	1,841	2,052	1,239
Total	211	1,841	2,052	1,239

Loans of \$321,630 to Member Associations are interest free.

In addition to the above loans, the charity balance sheet on page 24 includes the interest bearing loan of \$247,500 made to ICON (detailed in note 11).

13 Receivable from donors (group and charity)

	Unrestricted \$'000	Restricted \$'000	2008 Total \$'000	2007 Total \$'000
Compton Foundation	–	10	10	10
European Commission (EC)	–	223	223	1,132
Eric E & Edith H Bergstrom Foundation	–	101	101	101
Government of Denmark	–	–	–	920
Government of United Kingdom	–	–	–	11
The John D and Catherine T MacArthur Foundation	–	150	150	9
United Nations Fund for Population Activities (UNFPA)	–	41	41	10
United Nations Programme on HIV/AIDS (UNAIDS)	–	141	141	–
Anonymous donors	–	152	152	300
Other (various)	296	–	296	1,140
Total	296	818	1,114	3,633

14 Deferred income (group and charity)

	Unrestricted \$'000	Restricted \$'000	2008 Total \$'000	2007 Total \$'000
Deferred income balances brought forward	1,967	1,159	3,126	1,207
Recognition of prior year's deferred income	(1,468)	(1,159)	(2,627)	(571)
Income received for activities in future periods	3,251	2,051	5,302	2,626
Movement on lease benefits to be amortized over the lease period	(136)	–	(136)	(136)
Deferred income balances carried forward	3,614	2,051	5,665	3,126

15 Provisions (group and charity)

	2008 \$'000	2007 \$'000
Opening balance	204	182
Arising in year due to exchange rate movement	–	22
Reversal of unused provisions	(30)	–
Closing balance	174	204

Following an investigation by the Kenyan Revenue Authority in relation to unpaid employment taxes, IPPF have provided \$173,834.

The reversal of unused provisions relates to costs expected in respect of previous rental arrangements in the Europe Region, which did not arise on settlement of the matter.

16 Funds and reserves (group and charity)

Restricted funds

The use of these funds has been restricted by the donor indicated below.

	Balance at 1 January 2008 \$'000	Income \$'000	Expenditure \$'000	Balance at 31 December 2008 \$'000
Government				
Australia				
Capacity Building in the Pacific Phase I	1,021	818	328	1,511
Capacity Building in the Pacific Phase II	–	416	293	123
Denmark				
Capacity Building the 5As	4	–	–	4
Promoting SRH Education	901	450	490	861
Finland – Meeting Young People's Sexual & Reproductive Health Needs (Nepal)	18	113	169	(38)
Germany				
Addressing SRH of Youth in Angola	359	9	–	368
Improving Sexual & Reproductive Health of Young People in Haiti	35	1	41	(5)
Improving Sexual & Reproductive Health of Young People in Sierra Leone	–	585	551	34
Reproductive Health in Sudan	27	(28)	–	(1)
Japan – HIV/STI/AIDS Trust Fund	2,604	1,083	867	2,820
States of Jersey – Access to Health Care in Mali	37	0	38	(1)
South Korea				
Emergency Reproductive Health Services in Banda Aceh (post Tsunami)	28	–	(5)	33
Access to RH in Burkina Faso, Lesotho and Uganda	315	250	243	322
The Netherlands				
Youth Incentives Funds	35	–	44	(9)
Intensification Sexual and Reproductive Health and Rights (SRHR)	–	4,200	216	3,984
New Zealand – Reproductive Health Facility for the Pacific	–	232	206	26
Spain				
Improve Sexual and Reproductive Rights and Reduce Maternal Mortality in Sudan	–	169	112	57
United Nations Fund for Population Activities (UNFPA) Advocacy Programmes	–	–	1,114	(1,114)
Sweden – Africa Region	18	(18)	0	0
United Kingdom				
Joining Forces for Voice and Accountability (Europe and Western Hemisphere)	–	791	658	133
Improving the Sexual and Reproductive Health and Rights for Young Women in Nepal	–	151	46	105
Safe Motherhood Gender Based Violence in South Asia Region	44	71	55	60
People Living with HIV Stigma Index Research	–	340	418	(78)
Men's SRHR and Men as Partners	–	124	107	17
United States of America (USAID)				
Western Hemisphere Region – Sustainability Fund	3,367	(181)	666	2,520
Multi-donor Fund – Safe Abortion Action Fund	3,267	4,377	4,132	3,512
Total government restricted funds	12,080	13,953	10,789	15,244

16 Funds and reserves (continued)

	Balance at 1 January 2008 \$'000	Income \$'000	Expenditure \$'000	Balance at 31 December 2008 \$'000
Multilateral and other sources				
Arab Gulf Fund – Youth Health Protection	27	80	100	7
Erik E & Edith H Bergstrom Foundation				
Promoting Real Options	–	85	500	(415)
WHR Clinic Services (Bolivia)	2	274	152	124
Big Lottery Fund				
Brongo-ahafo project, Ghana	(8)	160	120	32
Saving Mothers' Lives in Yemen	153	(153)	–	–
Compton Foundation				
Public Health Institute – Emergency Contraceptives	25	10	–	35
Elton John AIDS Foundation				
Integration of HIV Services within a SRH Setting	–	54	–	54
European Commission				
ECOWAS: Ownership to Donorship	37	1	43	(5)
Europe Region Youth SRH&R Promotion	(45)	85	120	(80)
Family Based Violence in Afghanistan	181	1	183	(1)
Improving SRH&R for Street Kids	691	9	841	(141)
Safe Motherhood in South Asia	77	472	520	29
Vision 2000 Fund Project	118	3	375	(254)
Takis – Building a Civil Society Platform on SRHR	(31)	–	–	(31)
Equilibres et Population – Emergency Contraception	7	–	2	5
Ford Foundation				
Bill of Sexual Rights	102	–	40	62
Declaration of Sexual Rights	–	200	–	200
CSE assessment Central America	–	100	69	31
Building Consensus Rights	–	18	18	–
Bill & Melinda Gates Foundation				
Assessing Benefits of Integrated HIV and Reproductive Health – Africa	2,744	38	1,970	812
Europe Champions RH Champions Worldwide	(37)	–	–	(37)
Tackling the Supply Challenge	569	1,784	2,450	(97)
Gesellschaft fur Technische. Zusammenarbeit (GTZ) – Making Money Work for Women	7	26	45	(12)
Good Gifts				
Bicycles for Midwives – Africa	20	–	14	6
Bicycles for Midwives – India	–	33	33	–
Harry and Julia Abrahamson Fund for Youth SRH Services	200	–	183	17
William and Flora Hewlett Foundation				
Emergency Assistance for RH in Tsunami Affected Areas	18	–	–	18
Getting Closer: HIV/AIDS and SRH	47	–	47	–
Global Advocacy Europe Region	33	–	–	33
Global Advocacy Umbrella grant	1,147	2,425	1,177	2,395
Emergency Funds for Kenya	–	25	14	11
Video Conferencing Equipment	1	–	1	–

	Balance at 1 January 2008 \$'000	Income \$'000	Expenditure \$'000	Balance at 31 December 2008 \$'000
International Federation of the Red Cross				
Code of Practice	3	–	(1)	4
Self assessment tools – Men and Boys	–	3	4	(1)
Self assessment tools – HIV/AIDS	–	5	3	2
IPAS Abortion Meeting	–	30	–	30
The John D & Catherine T MacArthur Foundation				
ASTECS	(4)	–	42	(46)
Europe Region – Strengthening ICPD	10	71	128	(47)
International Advocacy to Advance SRH&R	(10)	110	–	100
Capacity Building MAs' Research	20	–	23	(3)
Building Capacity of MAs to enhance Governance, Management	80	170	67	183
SRH Youth Mexico	150	–	150	–
The MAC AIDS Foundation – People Living with HIV Stigma Index UK	–	227	4	223
Overbrook Foundation	40	–	–	40
Sir David Owen Memorial Fund	64	2	–	66
The David and Lucile Packard Foundation				
Country Global Pathways I	371	7	224	154
Country Global Pathways II	766	18	186	598
APCRSH Conference	4	(4)	–	–
Leadership Transition Fund	137	2	122	17
Institutional Strengthening – Ethiopia MA	10	–	10	–
L & H Price Foundation				
Expanding Social and Economic Empowerment of Women – Pakistan	20	–	20	–
Improving the SRH Status of Young Women – Nepal	50	50	50	50
Prospect Hill Foundation – SRH Guatemala	–	70	70	–
Helen Seymour Fund	202	5	–	207
Population Action International – Resource Mobilisation and Awareness	426	1,557	1,370	613
Summit Foundation				
Youth Friendly Services (Belize)	13	–	14	(1)
Youth Advocates for SRHR in Development	–	60	60	–
United Nations Development Programme (UNDP) – EuroNGO's – Annual General Meeting	11	–	–	11
United Nations Foundation – Young Women's Voices	–	68	62	6
United Nations Fund for Population Activities (UNFPA)				
Reproductive Health Mozambique	32	150	83	99
Strengthening SRH/HIV linkages Part 1	–	128	128	–
Strengthening SRH/HIV linkages Part 2	–	196	147	49
Sexual Violence (WHR)	–	321	213	108
Solomon Islands Earthquake Relief	–	–	(10)	10
Special Projects	–	4	4	–

16 Funds and reserves (continued)

	Balance at 1 January 2008 \$'000	Income \$'000	Expenditure \$'000	Balance at 31 December 2008 \$'000
United Nations Programme on HIV/AIDS (UNAIDS)				
Report Cards China and Jamaica	41	40	97	(16)
PLWA Index Briefing Pack	13	–	28	(15)
PLHIV	–	60	75	(15)
SRH & HIV/AIDS: Framework for Priority Linkages	10	–	–	10
Technical Support Facility (ESEAOR)	1,446	2,067	2,798	715
Report Cards Young Women and Girls	–	106	160	(54)
West African Health Organisation – WAHO	5	–	–	5
The Westwind Foundation				
Advocacy	60	–	–	60
UC Foundation, Trust, and Government	–	75	75	–
World Conservation Union – IUCN	18	–	18	–
Multi-donor Fund – EuroNGOs	36	–	–	36
Multi-donor Fund – NPOKI	113	–	113	–
Anonymous donors (not disclosed at their request)	3,626	7,342	10,353	615
Other (various)	331	15	74	–
Total multilateral and other sources	14,179	18,685	25,981	6,883
Total restricted funds	26,259	32,638	36,770	22,127

Unrestricted funds and reserves

Unrestricted funds and reserves are those free of any donor restriction on their use. All unrestricted funds and reserves, apart from the General Fund, are designated by IPPF for specific purposes as noted below.

Unrestricted funds and reserves	Note	Fixed asset reserve \$'000	Staff reserve \$'000	Translation reserve \$'000	Other designated funds \$'000	WHR sustainability fund \$'000	Innovation fund \$'000	Pension fund \$'000	General fund \$'000	Total \$'000
Balance at 1 January 2008		10,168	1,224	2,532	10,608	28,139	3,793	(10,336)	37,714	83,842
Regional savings	a	–	–	–	1,910	–	–	–	(1,910)	–
IPPF allocation to Innovation Fund	b	–	–	–	–	–	2,250	–	(2,250)	–
IPPF allocation to Translation Reserve	c	–	–	1,700	–	–	–	–	(1,700)	–
IPPF allocation to Emergency Commodity Fund	d	–	–	–	1,000	–	–	–	(1,000)	–
Fixed asset purchase	e	365	–	–	–	–	–	–	(365)	–
IPPF allocation to Mid-Term Strategic Review	f	–	–	–	250	–	–	–	(250)	–
Total transfers between funds		365	–	1,700	3,160	–	2,250	–	(7,475)	–
Net incoming (outgoing) resources		(1,048)	(50)	–	(3,695)	(1,206)	(1,996)	4,698	5,407	2,110
Net gains (losses) on investment assets		–	–	–	–	(6,160)	–	–	148	(6,012)
Actuarial gains/ (losses) on defined benefit scheme		–	–	–	–	–	–	(530)	–	(530)
Foreign exchange movements on pension liability		–	–	–	–	–	–	2,043	–	2,043
Foreign exchange movement arising upon consolidation		(9)	–	–	–	–	–	–	176	167
Balance at 31 December 2008		9,476	1,174	4,232	10,073	20,773	4,047	(4,125)	35,970	81,620

Explanations of movements on unrestricted funds and reserves in the year:

- a During the year regions made savings of US\$1,909,854. These funds are allocated to a designated fund for utilization in projects occurring in 2009.
- b US\$2.25 million was allocated to the Innovation Fund to allow the completion of the former Vision 2000 projects as well as provide new funds for projects selected for funding under the new Innovation Fund criteria.
- c Surplus funds of US\$1.7 million, resulting from foreign currency gains in the first half of the year, were allocated to a designated fund in May 2008, to provide for foreign currency risk in 2009.

- d Surplus funds of US\$1 million have been allocated to cover future registration costs for contraceptive supplies in a number of countries.
- e The fixed asset reserve represents the net book value of the fixed assets. The transfer of US\$364,775 represents a transfer from the general fund in order to meet purchase costs of new assets.
- f US\$250,000 has been allocated to cover costs associated with the mid-term review of the delivery of the Strategic Plan, to be undertaken in 2009.

16 Funds and reserves (continued)

Unrestricted funds and reserves (continued)

Fixed asset reserve	This represents the value of IPPF funds invested in unrestricted fixed assets (see note 10) or allocated for their replacement.
Staff reserve	These funds have been set aside to provide for redundancy and other separation costs in the event that IPPF should terminate its activities. This requirement only applies to the staff within the Western Hemisphere Regional Office.
Translation reserve	This reserve is used to absorb unexpected movements in the exchange rate which adversely affect the IPPF income forecasts.
Other designated funds	These include the 21st Century Fund (for sustainability projects in South American Member Associations) and various funds set aside for use by specific IPPF Regional Offices.
WHR sustainability fund	This fund was established by the Western Hemisphere Region during 2002 following the receipt of a single legacy to be used within that Region. The WHR Board have agreed to keep the legacy intact and to use the income generated for activities within the region. 3.5% of the fund is released per-annum, 50% of which funds Regional Office projects and 50% funds Member Association projects.
Innovation fund	The Innovation fund is used to develop innovative projects centred around the IPPF Five 'A's.
Pension Reserve	This fund represents the value of IPPF's assets and liabilities arising in respect of the Central Office Defined Benefit Pension Scheme, which was closed in 2007. The movements in this fund are detailed in note 20.
General fund	This contains the unrestricted funds of IPPF which are free of donor restrictions for specific activities or countries. These will fund future activities.

17 Forward commitments

	2008 \$'000	2007 \$'000
Orders for contraceptives and services due within one year	120	128

The commitments recognized are orders placed by the year-end but not yet delivered to IPPF, for which there is a legal obligation to make payment to the supplier.

Operating lease commitments:

At 31 December, the following annual non-cancellable operating lease rental commitments existed:

Expiring		
In the next 1-2 years	260	242
Between 2-5 years	556	749
Over 5 years	164	—

18 Contingent liability

The Kenyan Revenue Authority is currently requesting payment of taxes on employment income which IPPF believed was exempt by the Ministry of Foreign Affairs. Following similar claims relating to other tax periods which were successfully defended, management disclose a contingent liability of \$198,893. This is in addition to the balance of \$173,834 provided for within the 2008 balance sheet (included in note 15).

In the ordinary course of business IPPF is subject to certain legal actions. In the opinion of management, such matters will not have a material effect on the financial position of IPPF.

19 Funds Held on Behalf of Third Parties

At 31 December 2008, IPPF held funds on behalf of the Member Association of Guatemala amounting to \$8,092,202 (2007: \$10,037,263). These funds are held by IPPF WHR Inc as part of the overall investment portfolio. The funds are not included in the balance sheet as the trustees do not have a legal obligation to ensure their charitable application. The funds are invested as a separate fund, managed by the investment managers GMO.

At 31 December 2008, IPPF also held a sterling cash balance amounting to \$400,606 (£276,678 in sterling) belonging to White Ribbon Alliance for Safe Motherhood, on behalf of whom IPPF was acting as UK fiscal agent. These funds are included within the balance sheet, within accruals and other creditors.

20 Pension schemes

IPPF operates four pension schemes as described below:

The Central Office defined benefit pension scheme

This is a defined benefit scheme covering full-time staff in the Central Office, London. The assets of the fund are managed by independent professional investment managers.

The scheme's assets and liabilities are calculated by professional actuaries. The most recent formal actuarial valuation as at 1 July 2006 was performed using the Projected Unit Credit Method with a control period of 20 years. Under this method the current service cost will increase as the members of the Fund approach retirement. The main assumptions used in the valuation were:

- Investment return 6.6% per annum pre retirement and 4.8% per annum post retirement
- Pension increases 2.75% per annum
- Salary growth 3.75% per annum

The report for the actuarial valuation as at 1 July 2006 showed the fund to have an asset value of \$30.111 million under the ongoing valuation method. This is equivalent to a funding level of 62% (market value of assets versus liabilities).

A pension strategy was approved in October 2006 which commits IPPF to funding the current deficit in the scheme over the next 10 years.

Following the actuarial valuation results at 1 July 2006 a decision was taken to close the scheme to the current members from 1 September 2007. This followed the earlier decision in September 2003 to close the scheme to new members. The Recovery Plan was submitted to the UK Pension Regulator on 27 September 2007 and accepted on 4 February 2008. The plan will eliminate the deficit by 30 September 2017 based on annual employer contributions of \$1.959 million. As part of the deficit elimination plan an employer contribution of \$3 million was made in December 2007. This was in addition to the funding levels agreed as part of the July 2003 actuarial valuation and recognized the importance to IPPF of reducing the deficit in the scheme.

From 1 September 2007 the former members of this scheme were offered defined contribution pension arrangements.

The Central Office defined contribution pension scheme

Since 2003, a defined contribution pension scheme has been offered to permanent staff in the Central Office, London. IPPF contributes 7% of salary (2007: 7%), and it is non-contributory for staff. For staff previously included in the defined benefit scheme a contribution of 10% of salary is made.

The 2008 pension charge for this scheme is \$521,840 (2007: \$411,016).

The Western Hemisphere Regional Office pension scheme

Most full-time staff in the Western Hemisphere Regional Office are members of this defined contribution scheme. It is non-contributory for staff, and IPPF contributes 11.37% of eligible employee compensation.

The 2008 pension charge for this scheme is \$496,798 (2007: \$458,568).

The overseas staff pension scheme

Most full-time staff in the Africa Regional Office and some members of the Arab World and South Asia Regional Offices are members of this scheme. It is a defined contribution scheme under which IPPF contributes 12% of basic salary, and is non-contributory for staff.

The 2008 pension charge for this scheme is \$187,551 (2007: \$237,112).

At 31 December 2008 there were no outstanding or prepaid contributions for any of the defined contribution schemes.

FRS 17 disclosure note

There is one defined benefit pension scheme providing benefits on final pensionable salary, the Central Office pension scheme. The latest full actuarial valuation of this scheme was carried out at 1 July 2006 and was updated for FRS 17 purposes to 31 December 2008 by a qualified independent actuary.

The pension cost charge for the period represents contributions payable by IPPF to the scheme and were as follows:

	2008 \$'000	2007 \$'000
	4,846	3,955

There were no outstanding or prepaid contributions at the year end (2006 :nil).

The major assumptions used in the FRS 17 valuation were:

	2008 per annum	2007 per annum	2006 per annum
Inflation	3.0%	3.0%	2.75%
Salary increases	N/a	N/a	3.75%
Rate of discount	6.45%	5.8%	5.1%
Pension increases:			
Pre 88 GMP	Nil	Nil	Nil
Post 88 GMP	3.0%	3.0%	2.75%
Excess over GMP accrued pre 1.3.1998	6.0%	6.0%	6.0%
Excess over GMP accrued between 1.3.1998 and 31.7.2002	5.5%	5.5%	5.5%
Excess over GMP accrued between 1.8.2002 and 5.4.2005	3.0%	3.0%	2.5%
Excess over GMP accrued from 5.4.2005	2.5%	2.5%	2.25%

The present value of the scheme liability was calculated as follows, using the updated year of birth series adjusted for the medium cohort.

	2008	2007	2006
Pre retirement mortality (male/female)	PMA92BY/PFA92BY	PMA92BY/PFA92BY	PMA92BY/PFA92BY
Post retirement mortality for non pensioner members (male/female)	PMA92BY/PFA92BY	PMA92BY/PFA92BY	PMA92BY/PFA92BY
Post retirement mortality for pensioner members (male/female)	PMA92BY/PFA92BY	PMA92BY/PFA92BY	PMA92BY/PFA92BY

The assumptions used by the actuary are chosen from a range of possible actuarial assumptions which, due to the timescale covered, may not necessarily be borne out in practice.

20 Pension schemes (continued)

Scheme assets

The fair value of the scheme's assets, which are not intended to be realised in the short term and may be subject to significant change before they are realised, and the present value of the scheme's liabilities, which are derived from cash flow projections over long periods and thus inherently uncertain, were:

	2008 \$'000	2007 \$'000	2006 \$'000
Equities	12,378	19,668	18,347
Bonds	12,386	13,755	12,322
Cash	2,185	3,170	668
Total market value of assets	26,949	36,593	31,377
Present value of scheme liability	(31,074)	(46,929)	(52,081)
Deficit in scheme – Net pension liability	(4,125)	(10,336)	(20,744)

The expected rates of return on the assets in the scheme were:

	Long-term rate of return expected at 31/12/2008	Long-term rate of return expected at 31/12/2007	Long-term rate of return expected at 31/12/2006
Equities	8.4%	8.0%	7.75%
Bonds	4.9%	4.5%	4.75%
Cash	4.9%	4.75%	4.5%

Movement in pension fund liability during the year:

	2008 \$'000	2007 \$'000
Deficit in scheme at 1 January 2008	(10,336)	(20,744)
Employer's current service cost	–	(236)
Employer's contributions	4,846	3,955
Curtailment gain		1,490
Other finance income	(148)	(519)
Actuarial gain/(loss)	(530)	6,226
Exchange rate movement	2,043	(508)
Deficit in scheme at 31 December 2007	(4,125)	(10,336)

The curtailment gain arises because the scheme closed to future accrual on 1 September 2007, with all active members being given deferred pensions at that date. This means that benefits for those members now increase broadly in line with price inflation in future. Previously, these benefits increased in line with salary.

The exchange rate movement represents the difference in the exchange rate used to value the balance sheet in 2007 and 2008.

The actuary has confirmed that the valuations made above under the requirements of FRS 17 do not indicate that there is an immediate funding requirement or that there is any need to change the current funding rates made by the employer to the pension scheme.

The pension fund liability of \$4.125 million does not exceed the unrestricted funds balance.

Charge to the Statement of Financial Activities over the financial year:

	2008 \$'000	2007 \$'000
Employer's current service cost	–	236
Curtailment gain	–	(1,490)
Total operating charge	–	(1,254)
Expected return on pension fund assets	(1,802)	(2,165)
Interest on pension funds liabilities	1,950	2,684
Net Return	148	519
Total charge to the Statement of Financial Activities	148	(735)

History of experience gains and losses

	2008	2007	2006	2005	2004
Difference between the actual and expected return on scheme assets:					
Amount (\$'000)	(4,586)	(190)	227	2,224	431
Percentage of year end scheme assets	(17%)	(1%)	1%	9%	2%
Experience gains and losses on scheme liabilities:					
Amount (\$'000)	–	–	1,848	(368)	(314)
Percentage of year end present value of the scheme liabilities	0%	0%	4%	(1%)	(1%)
Total amount recognized in the statement of total recognized gains and losses:					
Amount (\$'000)	(530)	6,226	1,396	(5,965)	(1,578)
Percentage of year end present value of scheme liabilities	(2%)	13%	3%	(13%)	(4%)

21 Related parties

IPPF require each Governing Council member and Audit Committee member to complete an annual declaration of material transactions and interest form. These are reviewed by senior management and the Audit Committee. All IPPF staff are also required to complete such a form on joining the organization which is then up-dated as individual circumstances change. These forms are reviewed by Senior Management. These procedures are part of the policy which aims to ensure that people act in the best interests of IPPF at all times and that there is openness and transparency concerning any actual or potential conflict of interest.

Some members of the Governing Council are Presidents of Member Associations who receive grants from IPPF in accordance with the volunteer governance structure of IPPF.

One trustee, Mrs Mariam Mint Ahmed Aicha has a brother who is a senior staff member in the Member Association of Mauritania. The total grant to the Member Association in 2008 was \$504,437.

The outgoing Treasurer, Mrs Helen Eskett served as a Board member and Chair of the IPPF subsidiary company, ICON Ltd during 2008.

The Audit Committee of IPPF have reviewed the above disclosures and do not consider that any indicate a conflict of interest. There are no other related party interests or transactions that require disclosure.

Contacts

Members of the Governing Council entitled to vote at its May 2008 meeting

Africa Region	
Ms Aku Xornam Adzraku	Ghana
Mr Bebe Fidaly	Madagascar
Mrs Hannatu L Ibrahim	Nigeria
Dr Naomi Seboni	Botswana
Arab World Region	
Mrs Mariam Mint Ahmed Aicha	Mauritania
Mrs Kawthar Al-Khaier	Syria
Dr Moncef Ben Brahim	Tunisia
Prof Said Badri Kabouya	Algeria
Ms Abeer Ghaleb	Yemen
East, South East Asia & Oceania Region	
Mrs Sally Betham	Samoa
Mrs Helen Eskett (Treasurer)	New Zealand
Prof Ho Pak Chung	Hong Kong
Prof Dr Mary Huang Soo Lee	Malaysia
Mr Tang Kun	China
Europe Region	
Mr Gert-Inge Brander	Sweden
Ms Elena Dmitrieva	Russia
Ms Eva Palasthy	Switzerland
Mr Paul Soemer	Germany
Ms Lene Stavngaard	Denmark
South Asia Region	
Mr Dinidu De Alwis	Sri Lanka
Mr Syed Munir Husain	Pakistan
Ms Fathimath Shafeega	Maldives
Dr Safieh Shahriari	Iran
Dr Nozer Sheriar	India
Western Hemisphere Region	
Ms Diana Barco	Colombia
Ms Andrea Cohen	Canada
Mr Moisés Russo	Chile
Dr Jacqueline Sharpe (President)	Trinidad and Tobago
Dr Esther Vicente	Puerto Rico

Members of the Audit Committee

Mrs Khadiga Ismail Magzoub	Sudan
Prof Barbro Lenner–Axelson (Chair)	Sweden
Ms Bernadetta Ndunguru	Tanzania
Mr Saeed Ahmand Qureshi	Pakistan

Members of the Membership Committee

Mr Gert–Inge Brander	Sweden
Prof Dr Mary Huang Soo Lee	Malaysia
Prof Said Badri Kabouya	Algeria
Dr Malefetsane Ngatane	South Africa
Ms Fathimath Shafeega (Chair)	Maldives
Dr Esther Vicente	Puerto Rico

Members of the Governing Council entitled to vote at its November 2008 meeting

Africa Region	
Mr Bebe Fidaly	Madagascar
Mr Eric Guemne Kapche	Cameroon
Mrs Felicite Nsabimana	Mali
Dr Naomi Seboni (Treasurer)	Botswana
Mrs Roseline Toweh	Liberia
Arab World Region	
Mrs Mariam Mint Ahmed Aicha	Mauritania
Mrs Kawthar Al-Khaier	Syria
Mr Ahmed Al Sharefi	Iraq
Dr Moncef Ben Brahim	Tunisia
Prof Said Badri Kabouya	Algeria
East, South East Asia & Oceania Region	
Dr Kamaruzaman Ali	Malaysia
Ms Linda Penno	New Zealand
Dr Maria Talaitupu Kerslake	Samoa
Ms Wong Li Leng	Malaysia
Dr Zheng Zhenzhen	China
Europe Region	
Ms Kadija Azougach	France
Mr Deniz Deralla	Albania
Ms Elena Dmitrieva	Russia
Ms Ruth Ennis	Ireland
Ms Eva Palasthy	Switzerland
South Asia Region	
Ms Padma Cumaranatunge	Sri Lanka
Ms Begum Surayya Jabeen	Pakistan
Mr Subhash Pradhan	Nepal
Mr Ankit Saxena	India
Ms Fathimath Shafeega	Maldives
Western Hemisphere Region	
Ms Maria Ignacia Aybar	Chile
Ms Andrea Cohen	Canada
Mr Carlos Welti	Mexico
Dr Jacqueline Sharpe (President)	Trinidad and Tobago
Dr Esther Vicente	Puerto Rico

Members of the Audit Committee

Mrs Helen Eskett	New Zealand
Mrs Leila Khaled	Sudan
Prof Barbro Lenneer-Axelsson	Sweden
Mr J. E. Mistry	India

Members of the Membership Committee

Mr Bebe Fidaly	Madagascar
Prof Said Badri Kabouya	Algeria
Ms Eva Palasthy	Switzerland
Ms Linda Penno	New Zealand
Ms Fathimath Shafeega (Chair)	Maldives
Dr Esther Vicente	Puerto Rico

Senior Management Team

Director-General: **Gill Greer**

Deputy Director-General: **Lyn Thomas**

Director, Organizational Effectiveness & Governance: **Garry Dearden**

Director, Technical Knowledge & Support: **Nono Simelela**

Africa Regional Director: **Tewodros Melesse**

Arab World Regional Director: **Mohamed Kamel**

East and South East Asia and Oceania Regional Director: **Raj Karim**

European Network Regional Director: **Vicky Claeys**

South Asia Regional Director: **Anjali Sen**

Western Hemisphere Regional Director: **Carmen Barroso**

Finance Director: **John Good**

Registered Address

4 Newhams Row, London, SE1 3UZ, United Kingdom

tel: +44 (0)20 7939 8200

fax: +44 (0)20 7939 8300

web: www.ippf.org

email: info@ippf.org

Principal Banker

Barclays Bank Plc, One Churchill Place, London, E14 5HP, United Kingdom

Principal Investment Managers

GMO, 40 Rowes Wharf, Boston MA 02110, Massachusetts

External Auditor

KPMG LLP, 1 Forest Gate, Brighton Road, Crawley, RH11 9PT, United Kingdom

Solicitor

IPPF uses the services of several law firms, each one in accordance with their area of expertise. Further information is available on request.

How to help

If you would like to support the work of IPPF or any of our national affiliates by making a financial donation please visit our website at **www.ippf.org** or contact IPPF Central Office in London, UK.



Our Vision

IPPF envisages a world in which all women, men and young people have access to the information and services they need; a world in which sexuality is recognized both as a natural and precious aspect of life and as a fundamental human right; a world in which choices are fully respected and where stigma and discrimination have no place.

Our Mission

IPPF aims to improve the quality of life of individuals by campaigning for sexual and reproductive health and rights through advocacy and services, especially for poor and vulnerable people.

We defend the right of all young people to enjoy their sexual lives free from ill health, unwanted pregnancy, violence and discrimination. We work to ensure that women are not put at unnecessary risk of injury, illness and death as a result of pregnancy and childbirth. We support a woman's right to choose to terminate her pregnancy legally and safely.

We strive to eliminate sexually transmitted infections (STIs) and reduce the spread and impact of HIV/AIDS.

Our Core Values

IPPF believes that sexual and reproductive rights should be guaranteed for everyone because they are internationally recognized basic human rights. We are committed to gender equality, and to eliminating the discrimination which threatens individual well-being and leads to the widespread violation of health and human rights, particularly those of young women.

We value diversity and especially emphasize the participation of young people and people living with HIV/AIDS in our governance and in our programmes. We consider the spirit of volunteerism to be central to achieving our mandate and advancing our cause.

We are committed to working in partnership with communities, governments, other organizations and donors.

Cover

Main Photo:

- IPPF/ Chloe Hall/ Bulgaria

Three bottom photos (L-R)

- IPPF/ Chloe Hall/ Indonesia
- IPPF/ Chloe Hall/ Mauritania
- IPPF/ Chloe Hall/ Ethiopia

Back cover (L-R)

- IPPF/ Jon Spaul/ Colombia
- IPPF/ Chloe Hall/ Bulgaria
- IPPF/ Peter Caton/ India

Inside pages

- P4 IPPF/ Chloe Hall/ Mauritania
- P5 IPPF/ Jenny Matthews/ Bangladesh
- P7 IPPF/ Chloe Hall/ Syria
- P9 IPPF/ Chloe Hall/ Mauritania
- P10 Irish FPA/ Ireland
- P11 IPPF/ Chloe Hall/ Bulgaria
- P12 IPPF/ Arushi Singh/ Nepal
- P14 IPPF/ Chloe Hall/ Denmark
- P17 IPPF/ Nichole Sobecki/ Bolivia
- P19 IPPF/ Jane Mingay/ Rwanda
- P21 IPPF/ Peter Caton/ India
- P67 IPPF/ Chloe Hall/ Bulgaria



Published in May 2009 by
International Planned Parenthood Federation

IPPF
4 Newhams Row
London SE1 3UZ
United Kingdom

tel +44 (0)20 7939 8200
fax +44 (0)20 7939 8300
email info@ippf.org
web www.ippf.org

UK Registered Charity No. 229476



Printed on 75% recycled, chlorine-free paper,
an NAPM approved recycled product.